

Datasheet for ABIN2788937
anti-IL17RD antibody (C-Term)



[Go to Product page](#)

1 Image

Overview

Quantity:	100 µL
Target:	IL17RD
Binding Specificity:	C-Term
Reactivity:	Human, Rat
Host:	Rabbit
Clonality:	Polyclonal
Conjugate:	This IL17RD antibody is un-conjugated
Application:	Western Blotting (WB)

Product Details

Immunogen:	The immunogen is a synthetic peptide directed towards the C-terminal region of Human IL17RD
Sequence:	STKYRLMDNL PQLCSHLHSR DHGLQEPGQH TRQGSRRNYF RSKSGRSLYV
Predicted Reactivity:	Human: 100%, Rat: 79%
Characteristics:	This is a rabbit polyclonal antibody against IL17RD. It was validated on Western Blot.
Purification:	Affinity Purified

Target Details

Target:	IL17RD
Alternative Name:	IL17RD (IL17RD Products)

Target Details

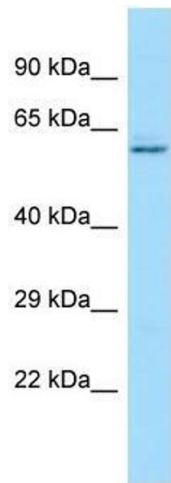
Background:	<p>This gene encodes a membrane protein belonging to the interleukin-17 receptor (IL-17R) protein family. The encoded protein is a component of the interleukin-17 receptor signaling complex, and the interaction between this protein and IL-17R does not require the interleukin (PMID: 19079364). The gene product also affects fibroblast growth factor signaling, inhibiting or stimulating growth through MAPK/ERK signaling.</p> <p>Protein Interaction Partner: MAP3K7, FGFR1,</p> <p>Protein Size: 595</p>
Molecular Weight:	65 kDa
Gene ID:	54756
Pathways:	Toll-Like Receptors Cascades

Application Details

Application Notes:	Optimal working dilution should be determined by the investigator.
Restrictions:	For Research Use only

Handling

Format:	Liquid
Concentration:	1 mg/mL
Buffer:	Liquid. Purified antibody supplied in 1x PBS buffer with 0.09 % (w/v) sodium azide and 2 % sucrose.
Preservative:	Sodium azide
Precaution of Use:	This product contains Sodium azide: a POISONOUS AND HAZARDOUS SUBSTANCE which should be handled by trained staff only.
Handling Advice:	Avoid repeat freeze-thaw cycles.
Storage:	-20 °C
Storage Comment:	For short term use, store at 2-8°C up to 1 week. For long term storage, store at -20°C in small aliquots to prevent freeze-thaw cycles.



Western Blotting

Image 1.