



## Datasheet for ABIN2788948 **anti-TBCD antibody (N-Term)**



[Go to Product page](#)

### 1 Image

#### Overview

Quantity:	100 µL
Target:	TBCD
Binding Specificity:	N-Term
Reactivity:	Human
Host:	Rabbit
Clonality:	Polyclonal
Conjugate:	This TBCD antibody is un-conjugated
Application:	Western Blotting (WB)

#### Product Details

Sequence:	KLVQRLGLTF LKPKVAAWRY QRGCRSLAAN LQLLTQGQSE QKPLILTEDD
Predicted Reactivity:	Human: 100%
Characteristics:	This is a rabbit polyclonal antibody against TBCD. It was validated on Western Blot.
Purification:	Affinity Purified

#### Target Details

Target:	TBCD
Alternative Name:	TBCD ( <a href="#">TBCD Products</a> )
Background:	Cofactor D is one of four proteins (cofactors A, D, E, and C) involved in the pathway leading to correctly folded beta-tubulin from folding intermediates. Cofactors A and D are believed to play

## Target Details

---

a role in capturing and stabilizing beta-tubulin intermediates in a quasi-native confirmation. Cofactor E binds to the cofactor D/beta-tubulin complex, interaction with cofactor C then causes the release of beta-tubulin polypeptides that are committed to the native state.

Alias Symbols: KIAA0988

Protein Interaction Partner: UBC, SUMO1, NEDD8, VPS25, APEH, ACBD3, SH3GLB2, WDR12, VPS29, RPUUSD2, GORASP2, ATG7, TOM1, NMI, CUL3, TSN, STAT3, STAT1, SNX2, SARS, NASP, ME1, HIST1H1C, GTF2A1, POLR2I, SMAD9, APP, ACD, POT1, TERF1, Tubb4b, Tubb5, DEXI, ARL2, TBCE, TUBB, XRCC6, PPP2CA,

Protein Size: 1192

---

Molecular Weight: 131 kDa

---

Gene ID: 6904

---

NCBI Accession: [NM\\_005993](#), [NP\\_005984](#)

---

UniProt: [Q9BTW9](#)

---

Pathways: [Cell-Cell Junction Organization](#)

## Application Details

---

Application Notes: Optimal working dilutions should be determined experimentally by the investigator.

---

Comment: Antigen size: 1192 AA

---

Restrictions: For Research Use only

## Handling

---

Format: Liquid

---

Concentration: Lot specific

---

Buffer: Liquid. Purified antibody supplied in 1x PBS buffer with 0.09 % (w/v) sodium azide and 2 % sucrose.

---

Preservative: Sodium azide

---

Precaution of Use: This product contains Sodium azide: a POISONOUS AND HAZARDOUS SUBSTANCE which should be handled by trained staff only.

---

Handling Advice: Avoid repeated freeze-thaw cycles.

---

Storage: -20 °C

---

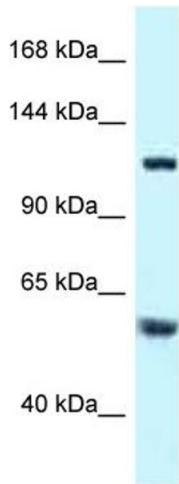
## Handling

---

Storage Comment: For short term use, store at 2-8°C up to 1 week. For long term storage, store at -20°C in small aliquots to prevent freeze-thaw cycles.

## Images

---



Rabbit Anti-TBCD Antibody  
Catalog Number: ARP61918  
Lot Number: QC32635  
Lane: HeLa Cell Lysate

Antibody Titration: 1.0µg/ml  
Gel Concentration: 6-18%

### Western Blotting

Image 1.