

Datasheet for ABIN2788961
anti-MICAL1 antibody (C-Term)[Go to Product page](#)

1 Image

Overview

Quantity:	100 µL
Target:	MICAL1
Binding Specificity:	C-Term
Reactivity:	Human, Rat, Pig, Rabbit, Cow, Dog, Horse, Guinea Pig
Host:	Rabbit
Clonality:	Polyclonal
Conjugate:	This MICAL1 antibody is un-conjugated
Application:	Western Blotting (WB)

Product Details

Sequence:	WQLDQELRGY MNREENLKTA ADRQAEDQVL RKLVDLVNQR DALIRFQEER
Predicted Reactivity:	Cow: 100%, Dog: 77%, Guinea Pig: 79%, Horse: 100%, Human: 100%, Pig: 100%, Rabbit: 100%, Rat: 100%
Characteristics:	This is a rabbit polyclonal antibody against MICAL1. It was validated on Western Blot.
Purification:	Affinity Purified

Target Details

Target:	MICAL1
Alternative Name:	MICAL1 (MICAL1 Products)
Background:	MICAL1 may be a cytoskeletal regulator that connects NEDD9 to intermediate filaments.

Target Details

Alias Symbols: DKFZp434B1517, FLJ11937, FLJ21739, MICAL, MICAL-1, NICAL
Protein Interaction Partner: UBC, EHD1, GADD45A, RPS6KA6, RAB10, TAB1, PIK3R3, GSK3B, NEDD9, RAB1B, PTK2, VIM, SRC, GRB2, CRK, ABL1, RAB1A,
Protein Size: 981

Molecular Weight: 107 kDa

Gene ID: 64780

NCBI Accession: [NM_001159291](#), [NP_001152763](#)

Application Details

Application Notes: Optimal working dilutions should be determined experimentally by the investigator.

Comment: Antigen size: 981 AA

Restrictions: For Research Use only

Handling

Format: Liquid

Concentration: Lot specific

Buffer: Liquid. Purified antibody supplied in 1x PBS buffer with 0.09 % (w/v) sodium azide and 2 % sucrose.

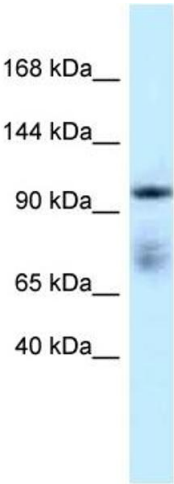
Preservative: Sodium azide

Precaution of Use: This product contains Sodium azide: a POISONOUS AND HAZARDOUS SUBSTANCE which should be handled by trained staff only.

Handling Advice: Avoid repeated freeze-thaw cycles.

Storage: -20 °C

Storage Comment: For short term use, store at 2-8°C up to 1 week. For long term storage, store at -20°C in small aliquots to prevent freeze-thaw cycles.



Rabbit Anti-MICAL1 Antibody
Catalog Number: ARP61957
Lot Number: QC32661
Lane: Placenta Lysate

Antibody Titration: 1.0µg/ml
Gel Concentration: 6-18%

Western Blotting

Image 1.