

Datasheet for ABIN2788966
anti-RPL23A antibody (N-Term)



[Go to Product page](#)

1 Image

Overview

Quantity:	100 µL
Target:	RPL23A
Binding Specificity:	N-Term
Reactivity:	Human, Mouse, Rat, Zebrafish (Danio rerio), Cow, Guinea Pig, Horse, Rabbit, Sheep, Dog
Host:	Rabbit
Clonality:	Polyclonal
Conjugate:	This RPL23A antibody is un-conjugated
Application:	Western Blotting (WB)

Product Details

Sequence:	HSKKKKKIRT SPTFRRPKTL RLRRQPKYPR KSAPRRNKLD HYAIKFPLT
Predicted Reactivity:	Cow: 100%, Dog: 100%, Guinea Pig: 100%, Horse: 100%, Human: 100%, Mouse: 100%, Rabbit: 100%, Rat: 100%, Sheep: 100%, Zebrafish: 100%
Characteristics:	This is a rabbit polyclonal antibody against RPL23A. It was validated on Western Blot.
Purification:	Affinity Purified

Target Details

Target:	RPL23A
Alternative Name:	RPL23A (RPL23A Products)
Background:	Ribosomes, the organelles that catalyze protein synthesis, consist of a small 40S subunit and a

Target Details

large 60S subunit. Together these subunits are composed of 4 RNA species and approximately 80 structurally distinct proteins. This gene encodes a ribosomal protein that is a component of the 60S subunit. The protein belongs to the L23P family of ribosomal proteins. It is located in the cytoplasm. The protein may be one of the target molecules involved in mediating growth inhibition by interferon. In yeast, the corresponding protein binds to a specific site on the 26S rRNA. This gene is co-transcribed with the U42A, U42B, U101A, and U101B small nucleolar RNA genes, which are located in its third, first, second, and fourth introns, respectively. As is typical for genes encoding ribosomal proteins, there are multiple processed pseudogenes of this gene dispersed through the genome.

Alias Symbols: FLJ27455, MDA20, L23A

Protein Interaction Partner: CEP76, CEP250, TUBGCP3, TP53, UBC, RNF2, EED, EIF3CL, DIMT1, NMT1, RPS27, SND1, NELFB, RPL36, RPL35, IGF2BP3, SYNCRIP, EEF1E1, AIMP1, EIF3D, RPS11, RPLP0, RPL24, RPL21, RPL19, RPL18, RPL15, RPL13, MAP2, IARS, HNRNPU, EPRS, RPL7A, QARS, PPIA, PA2G4, YBX1,

Protein Size: 156

Molecular Weight: 18 kDa

Gene ID: 6147

NCBI Accession: [NM_006638](#), [NP_006629](#)

UniProt: [O75818](#)

Application Details

Application Notes: Optimal working dilutions should be determined experimentally by the investigator.

Comment: Antigen size: 156 AA

Restrictions: For Research Use only

Handling

Format: Liquid

Concentration: Lot specific

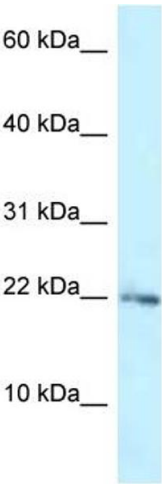
Buffer: Liquid. Purified antibody supplied in 1x PBS buffer with 0.09 % (w/v) sodium azide and 2 % sucrose.

Preservative: Sodium azide

Handling

Precaution of Use:	This product contains Sodium azide: a POISONOUS AND HAZARDOUS SUBSTANCE which should be handled by trained staff only.
Handling Advice:	Avoid repeated freeze-thaw cycles.
Storage:	-20 °C
Storage Comment:	For short term use, store at 2-8°C up to 1 week. For long term storage, store at -20°C in small aliquots to prevent freeze-thaw cycles.

Images



Western Blotting

Image 1. WB Suggested Anti-RPL23A Antibody Titration: 1.0 ug/ml Positive Control: ACHN Whole Cell There is BioGPS gene expression data showing that RPL23A is expressed in ACHN