

Datasheet for ABIN2788987  
**anti-KIF7 antibody (C-Term)**



[Go to Product page](#)

1 Image

## Overview

Quantity:	100 µL
Target:	KIF7
Binding Specificity:	C-Term
Reactivity:	Human, Mouse, Rat, Pig, Cow, Dog
Host:	Rabbit
Clonality:	Polyclonal
Conjugate:	This KIF7 antibody is un-conjugated
Application:	Western Blotting (WB)

## Product Details

Immunogen:	The immunogen is a synthetic peptide directed towards the C-terminal region of human KIF7
Sequence:	RDLVHAPLPL TWKRSSLCGE EQGSPEELRQ REAAEPLVGR VLPVGEAGLP
Predicted Reactivity:	Cow: 92%, Dog: 79%, Human: 100%, Mouse: 77%, Pig: 100%, Rat: 77%
Characteristics:	This is a rabbit polyclonal antibody against KIF7. It was validated on Western Blot.
Purification:	Affinity Purified

## Target Details

Target:	KIF7
Alternative Name:	KIF7 ( <a href="#">KIF7 Products</a> )
Background:	This gene encodes a cilia-associated protein belonging to the kinesin family. This protein plays

## Target Details

a role in the sonic hedgehog (SHH) signaling pathway through the regulation of GLI transcription factors. It functions as a negative regulator of the SHH pathway by preventing inappropriate activation of GLI2 in the absence of ligand, and as a positive regulator by preventing the processing of GLI3 into its repressor form. Mutations in this gene have been associated with various ciliopathies.

Alias Symbols: ACLS, AGBK, HLS2, JBTS12, UNQ340

Protein Size: 829

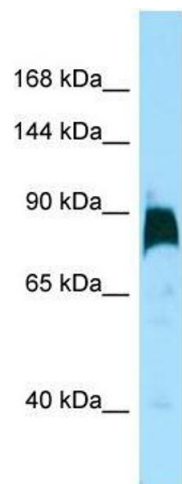
Molecular Weight:	91 kDa
Gene ID:	374654
NCBI Accession:	<a href="#">NM_198525</a> , <a href="#">NP_940927</a>
UniProt:	<a href="#">Q2M1P5</a>
Pathways:	<a href="#">Hedgehog Signaling</a>

## Application Details

Application Notes:	Optimal working dilution should be determined by the investigator.
Restrictions:	For Research Use only

## Handling

Format:	Liquid
Concentration:	1 mg/mL
Buffer:	Liquid. Purified antibody supplied in 1x PBS buffer with 0.09 % (w/v) sodium azide and 2 % sucrose.
Preservative:	Sodium azide
Precaution of Use:	This product contains Sodium azide: a POISONOUS AND HAZARDOUS SUBSTANCE which should be handled by trained staff only.
Handling Advice:	Avoid repeat freeze-thaw cycles.
Storage:	-20 °C
Storage Comment:	For short term use, store at 2-8°C up to 1 week. For long term storage, store at -20°C in small aliquots to prevent freeze-thaw cycles.



**Western Blotting**

**Image 1.**