

Datasheet for ABIN2788992
anti-WSB1 antibody (Middle Region)[Go to Product page](#)

1 Image

Overview

Quantity:	100 µL
Target:	WSB1
Binding Specificity:	Middle Region
Reactivity:	Human, Rat, Mouse, Horse, Pig, Rabbit, Cow, Dog, Guinea Pig
Host:	Rabbit
Clonality:	Polyclonal
Conjugate:	This WSB1 antibody is un-conjugated
Application:	Western Blotting (WB)

Product Details

Immunogen:	The immunogen is a synthetic peptide directed towards the middle region of Rat Wsb1
Sequence:	VPWSQCLKNF LLHGSKNVTN SSCLKLARQN SNGGQKNKPR EHIIDCGDIV
Predicted Reactivity:	Cow: 100%, Dog: 100%, Guinea Pig: 93%, Horse: 100%, Human: 100%, Mouse: 86%, Pig: 100%, Rabbit: 100%, Rat: 100%
Characteristics:	This is a rabbit polyclonal antibody against Wsb1. It was validated on Western Blot.
Purification:	Affinity Purified

Target Details

Target:	WSB1
Alternative Name:	Wsb1 (WSB1 Products)

Target Details

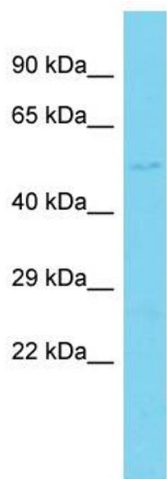
Background:	The function of this protein remains unknown. Alias Symbols: - Protein Size: 421
Molecular Weight:	46 kDa
Gene ID:	303336
NCBI Accession:	NM_001042561 , NP_001036026
UniProt:	B3DM89

Application Details

Application Notes:	Optimal working dilutions should be determined experimentally by the investigator.
Comment:	Antigen size: 421 AA
Restrictions:	For Research Use only

Handling

Format:	Liquid
Concentration:	Lot specific
Buffer:	Liquid. Purified antibody supplied in 1x PBS buffer with 0.09 % (w/v) sodium azide and 2 % sucrose.
Preservative:	Sodium azide
Precaution of Use:	This product contains Sodium azide: a POISONOUS AND HAZARDOUS SUBSTANCE which should be handled by trained staff only.
Handling Advice:	Avoid repeated freeze-thaw cycles.
Storage:	-20 °C
Storage Comment:	For short term use, store at 2-8°C up to 1 week. For long term storage, store at -20°C in small aliquots to prevent freeze-thaw cycles.



Western Blotting
Image 1. Host: Rabbit
Target Name: Wsb1
Sample Tissue: Rat Heart lysates
Antibody Dilution: 1.0 µg/mL