

Datasheet for ABIN2789013  
**anti-LRMP antibody (C-Term)**[Go to Product page](#)

## 1 Image

## Overview

Quantity:	100 µL
Target:	LRMP
Binding Specificity:	C-Term
Reactivity:	Human, Cow, Dog, Horse, Rabbit, Guinea Pig
Host:	Rabbit
Clonality:	Polyclonal
Conjugate:	This LRMP antibody is un-conjugated
Application:	Western Blotting (WB)

## Product Details

Sequence:	SKQSEHRPSL PRFISTYSWA DAEEEKCELEK TKDDSEPSGE ETVERTRKPS
Predicted Reactivity:	Cow: 79%, Dog: 86%, Guinea Pig: 83%, Horse: 86%, Human: 100%, Rabbit: 85%
Characteristics:	This is a rabbit polyclonal antibody against LRMP. It was validated on Western Blot.
Purification:	Affinity Purified

## Target Details

Target:	LRMP
Alternative Name:	LRMP ( <a href="#">LRMP Products</a> )
Background:	The protein encoded by this gene is expressed in a developmentally regulated manner in lymphoid cell lines and tissues. The protein is localized to the cytoplasmic face of the

## Target Details

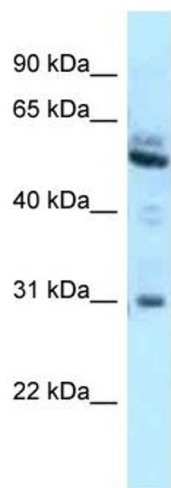
	endoplasmic reticulum. Alias Symbols: JAW1 Protein Interaction Partner: YWHAZ, YWHAE, Protein Size: 499
Molecular Weight:	55 kDa
Gene ID:	4033
NCBI Accession:	<a href="#">NM_006152</a> , <a href="#">NP_006143</a>

## Application Details

Application Notes:	Optimal working dilutions should be determined experimentally by the investigator.
Comment:	Antigen size: 499 AA
Restrictions:	For Research Use only

## Handling

Format:	Liquid
Concentration:	Lot specific
Buffer:	Liquid. Purified antibody supplied in 1x PBS buffer with 0.09 % (w/v) sodium azide and 2 % sucrose.
Preservative:	Sodium azide
Precaution of Use:	This product contains Sodium azide: a POISONOUS AND HAZARDOUS SUBSTANCE which should be handled by trained staff only.
Handling Advice:	Avoid repeated freeze-thaw cycles.
Storage:	-20 °C
Storage Comment:	For short term use, store at 2-8°C up to 1 week. For long term storage, store at -20°C in small aliquots to prevent freeze-thaw cycles.



Rabbit Anti-LRMP Antibody  
Catalog Number: ARP62087  
Lot Number: QC32839  
Lane: A549 Cell Lysate

Antibody Titration: 1.0µg/ml  
Gel Concentration: 12%

Western Blotting

Image 1.