

Datasheet for ABIN2789016
anti-CCRL1 antibody (C-Term)[Go to Product page](#)

2 Images

Overview

Quantity:	100 µL
Target:	CCRL1
Binding Specificity:	C-Term
Reactivity:	Human, Mouse, Rat, Rabbit, Horse, Cow, Dog, Guinea Pig
Host:	Rabbit
Clonality:	Polyclonal
Conjugate:	This CCRL1 antibody is un-conjugated
Application:	Western Blotting (WB), Immunohistochemistry (IHC)

Product Details

Sequence:	SIALFHSCLN PILYVFMGAS FKNYVMKVAK KYGSWRRQRQ SVEEFPFDSE
Predicted Reactivity:	Cow: 93%, Dog: 86%, Guinea Pig: 93%, Horse: 93%, Human: 100%, Mouse: 93%, Rabbit: 86%, Rat: 86%
Characteristics:	This is a rabbit polyclonal antibody against CCRL1. It was validated on Western Blot.
Purification:	Affinity Purified

Target Details

Target:	CCRL1
Alternative Name:	CCRL1 (CCRL1 Products)
Background:	The protein encoded by this gene is a member of the G protein-coupled receptor family, and is a

Target Details

receptor for C-C type chemokines. This receptor has been shown to bind dendritic cell- and T cell-activated chemokines including CCL19/ELC, CCL21/SLC, and CCL25/TECK. Alternatively spliced transcript variants encoding the same protein have been described.

Alias Symbols: CC-CKR-11, CCBP2, CCR10, CCR11, CCX-CKR, CKR-11, PPR1, VSHK1, CCR-11, CCX CKR, CCRL1

Protein Interaction Partner: CDK2, CXCL13, CCL21, CCL25, CCL8, CCL19, CCL13, CCL11, CCL5, CCL7, CCL2,

Protein Size: 350

Molecular Weight: 39 kDa

Gene ID: 51554

NCBI Accession: [NM_016557](#), [NP_057641](#)

UniProt: [Q9NPB9](#)

Application Details

Application Notes: Optimal working dilutions should be determined experimentally by the investigator.

Comment: Antigen size: 350 AA

Restrictions: For Research Use only

Handling

Format: Liquid

Concentration: Lot specific

Buffer: Liquid. Purified antibody supplied in 1x PBS buffer with 0.09 % (w/v) sodium azide and 2 % sucrose.

Preservative: Sodium azide

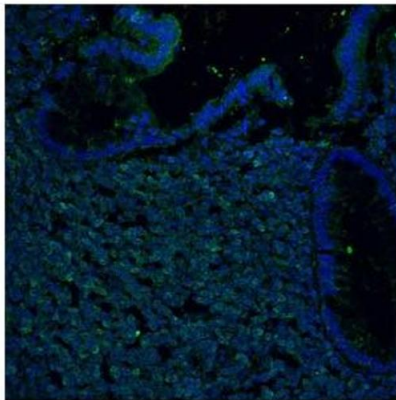
Precaution of Use: This product contains Sodium azide: a POISONOUS AND HAZARDOUS SUBSTANCE which should be handled by trained staff only.

Handling Advice: Avoid repeated freeze-thaw cycles.

Storage: -20 °C

Storage Comment: For short term use, store at 2-8°C up to 1 week. For long term storage, store at -20°C in small aliquots to prevent freeze-thaw cycles.

CCRL1



See Immunohistochemistry 1 Data and Customer Feedback tab for more information.



Rabbit Anti-CCRL1 Antibody
Catalog Number: ARP62099
Lot Number: QC32849
Lane: 293T Cell Lysate

Antibody Titration: 1.0 µg/ml
Gel Concentration: 12%

Immunohistochemistry

Image 1. Sample Type: human colon tissues infected ex-vivo with HIV-1

Green: Primary

Blue: DAPI

Primary Dilution: 1:1000

Secondary Antibody: Donkey anti-Rabbit AF 488

Secondary Dilution: 1:500

Image Submitted By: Chiara Foglieni

San Raffaele Scientific Institute, Milan, Italy

Western Blotting

Image 2.