

Datasheet for ABIN2789030
anti-TTC1 antibody (Middle Region)



[Go to Product page](#)

1 Image

Overview

Quantity:	100 µL
Target:	TTC1
Binding Specificity:	Middle Region
Reactivity:	Human, Mouse, Rat, Cow, Dog, Rabbit, Guinea Pig, Horse, Saccharomyces cerevisiae
Host:	Rabbit
Clonality:	Polyclonal
Conjugate:	This TTC1 antibody is un-conjugated
Application:	Western Blotting (WB)

Product Details

Sequence:	ELEKNMSDEE KQKRREESTR LKEEGNEQFK KGDYIEAESS YSRALEMCPs
Predicted Reactivity:	Cow: 79%, Dog: 86%, Guinea Pig: 93%, Horse: 93%, Human: 100%, Mouse: 86%, Rabbit: 79%, Rat: 93%, Yeast: 75%
Characteristics:	This is a rabbit polyclonal antibody against TTC1. It was validated on Western Blot.
Purification:	Affinity Purified

Target Details

Target:	TTC1
Alternative Name:	TTC1 (TTC1 Products)
Background:	The function of this protein remains unknown.

Target Details

Alias Symbols: FLJ46404, TPR1

Protein Interaction Partner: RNF41, NDE1, HSPA4L, BAG2, VAPA, VAPB, TUBA1A, UBC, AARSD1, XPO5, KPNA6, XPO7, SNF8, VAT1, SEC23A, EFTUD2, EIF3J, CUL4B, HIST1H4A, RPUSD2, SHMT1, SH3GL1, SARS, PPP2CB, PPM1G, OSBP, NCBP1, HARS, GTF2E1, GFPT1, GARS, CARS, PPP6R2, Hspa8, SOX5, PEX14, SRXN1,

Protein Size: 292

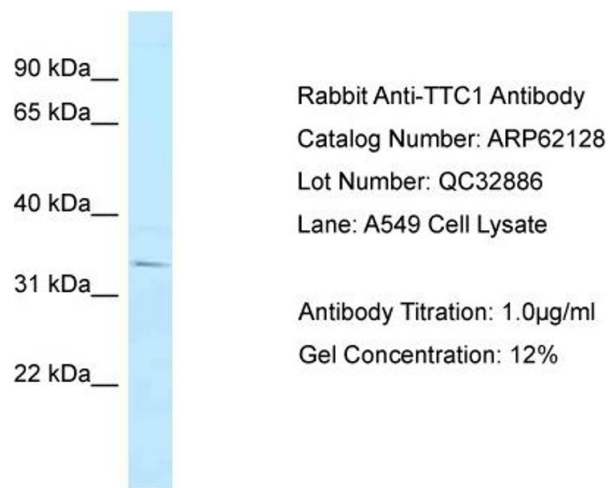
Molecular Weight:	32 kDa
Gene ID:	7265
NCBI Accession:	NM_003314 , NP_003305
UniProt:	Q99614

Application Details

Application Notes:	Optimal working dilutions should be determined experimentally by the investigator.
Comment:	Antigen size: 292 AA
Restrictions:	For Research Use only

Handling

Format:	Liquid
Concentration:	Lot specific
Buffer:	Liquid. Purified antibody supplied in 1x PBS buffer with 0.09 % (w/v) sodium azide and 2 % sucrose.
Preservative:	Sodium azide
Precaution of Use:	This product contains Sodium azide: a POISONOUS AND HAZARDOUS SUBSTANCE which should be handled by trained staff only.
Handling Advice:	Avoid repeated freeze-thaw cycles.
Storage:	-20 °C
Storage Comment:	For short term use, store at 2-8°C up to 1 week. For long term storage, store at -20°C in small aliquots to prevent freeze-thaw cycles.



Western Blotting

Image 1.