

Datasheet for ABIN2789054
anti-NSL1 antibody (C-Term)[Go to Product page](#)

1 Image

Overview

Quantity:	100 µL
Target:	NSL1
Binding Specificity:	C-Term
Reactivity:	Human, Cow
Host:	Rabbit
Clonality:	Polyclonal
Conjugate:	This NSL1 antibody is un-conjugated
Application:	Western Blotting (WB)

Product Details

Sequence:	PALIEQGEGF SQVLRMQPVI HLQRIHQEVF SSCHRKPDAK PENFITQIET
Predicted Reactivity:	Cow: 79%, Human: 100%
Characteristics:	This is a rabbit polyclonal antibody against NSL1. It was validated on Western Blot.
Purification:	Affinity Purified

Target Details

Target:	NSL1
Alternative Name:	NSL1 (NSL1 Products)
Background:	This gene encodes a protein with two coiled-coil domains that localizes to kinetochores, which are chromosome-associated structures that attach to microtubules and mediate chromosome

Target Details

movements during cell division. The encoded protein is part of a conserved protein complex that includes two chromodomain-containing proteins and a component of the outer plate of the kinetochore. This protein complex is proposed to bridge centromeric heterochromatin with the outer kinetochore structure. Multiple transcript variants encoding different isoforms have been found for this gene.

Alias Symbols: C1orf48, DC8, DKFZp566O1646, MIS14

Protein Interaction Partner: UBC, SUGT1, G6PC, CBX5, NDC80, MIS12, CASC5, NSL1, ZWINT, NF1, BUB1, HSP90AA1, DSN1, SGOL1, CBX3, CBX1, AURKB, MAD2L1, BUB1B,

Protein Size: 281

Molecular Weight:	31 kDa
-------------------	--------

Gene ID:	25936
----------	-------

NCBI Accession:	NM_015471 , NP_056286
-----------------	---

UniProt:	Q96IY1
----------	------------------------

Application Details

Application Notes:	Optimal working dilutions should be determined experimentally by the investigator.
--------------------	--

Comment:	Antigen size: 281 AA
----------	----------------------

Restrictions:	For Research Use only
---------------	-----------------------

Handling

Format:	Liquid
---------	--------

Concentration:	Lot specific
----------------	--------------

Buffer:	Liquid. Purified antibody supplied in 1x PBS buffer with 0.09 % (w/v) sodium azide and 2 % sucrose.
---------	---

Preservative:	Sodium azide
---------------	--------------

Precaution of Use:	This product contains Sodium azide: a POISONOUS AND HAZARDOUS SUBSTANCE which should be handled by trained staff only.
--------------------	--

Handling Advice:	Avoid repeated freeze-thaw cycles.
------------------	------------------------------------

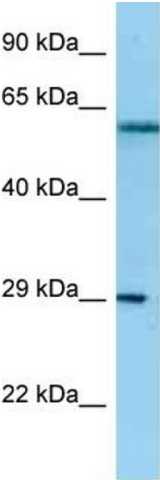
Storage:	-20 °C
----------	--------

Storage Comment:	For short term use, store at 2-8°C up to 1 week. For long term storage, store at -20°C in small
------------------	---

Handling

aliquots to prevent freeze-thaw cycles.

Images



Rabbit Anti-NSL1 Antibody
Catalog Number: ARP62184
Lot Number: QC34008
Lane: Hela Cell Lysate

Antibody Titration: 1.0µg/ml
Gel Concentration: 12%

Western Blotting

Image 1.