

Datasheet for ABIN2789104
anti-PRSS58 antibody (C-Term)[Go to Product page](#)

1 Image

Overview

Quantity:	100 µL
Target:	PRSS58
Binding Specificity:	C-Term
Reactivity:	Human, Rabbit, Horse
Host:	Rabbit
Clonality:	Polyclonal
Conjugate:	This PRSS58 antibody is un-conjugated
Application:	Western Blotting (WB)

Product Details

Sequence:	LPYQTISENT MCSVSTWSYN VCDIYKEPDS LQTVNISVIS KPQCRDAYKT
Predicted Reactivity:	Horse: 79%, Human: 100%, Rabbit: 79%
Characteristics:	This is a rabbit polyclonal antibody against PRSS58. It was validated on Western Blot.
Purification:	Affinity Purified

Target Details

Target:	PRSS58
Alternative Name:	PRSS58 (PRSS58 Products)
Background:	This gene encodes a member of the trypsin family of serine proteases. This gene and several related trypsinogen genes are localized to the T cell receptor beta locus on chromosome 7. This

Target Details

gene was previously described as a trypsinogen-like pseudogene, but it is now thought to be a protein-coding gene.

Alias Symbols: FLJ16649, MGC35022, TRY1, UNQ2540, PRSS1, TRYX3

Protein Size: 241

Molecular Weight: 27 kDa

Gene ID: 136541

NCBI Accession: [NM_001001317](#), [NP_001001317](#)

UniProt: [Q8IYP2](#)

Application Details

Application Notes: Optimal working dilutions should be determined experimentally by the investigator.

Comment: Antigen size: 241 AA

Restrictions: For Research Use only

Handling

Format: Liquid

Concentration: Lot specific

Buffer: Liquid. Purified antibody supplied in 1x PBS buffer with 0.09 % (w/v) sodium azide and 2 % sucrose.

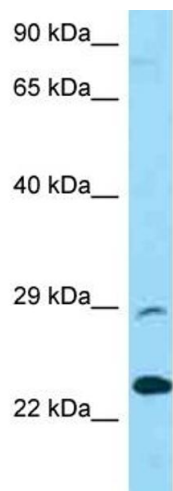
Preservative: Sodium azide

Precaution of Use: This product contains Sodium azide: a POISONOUS AND HAZARDOUS SUBSTANCE which should be handled by trained staff only.

Handling Advice: Avoid repeated freeze-thaw cycles.

Storage: -20 °C

Storage Comment: For short term use, store at 2-8°C up to 1 week. For long term storage, store at -20°C in small aliquots to prevent freeze-thaw cycles.



Rabbit Anti-PRSS58 Antibody
Catalog Number: ARP62309
Lot Number: QC34027
Lane: U937 Cell Lysate

Antibody Titration: 1.0µg/ml
Gel Concentration: 12%

Western Blotting
Image 1.