

Datasheet for ABIN2789114
anti-PROSC antibody (C-Term)[Go to Product page](#)

2 Images

Overview

Quantity:	100 µL
Target:	PROSC
Binding Specificity:	C-Term
Reactivity:	Human, Dog, Mouse, Rat, Guinea Pig
Host:	Rabbit
Clonality:	Polyclonal
Conjugate:	This PROSC antibody is un-conjugated
Application:	Western Blotting (WB)

Product Details

Sequence:	PADQVELSMG MSADFQHAVE VGSTNVRIGS TIFGERDYSK KPTPDKCAAD
Predicted Reactivity:	Dog: 85%, Guinea Pig: 100%, Human: 100%, Mouse: 85%, Rat: 100%
Characteristics:	This is a rabbit polyclonal antibody against PROSC. It was validated on Western Blot.
Purification:	Affinity Purified

Target Details

Target:	PROSC
Alternative Name:	PROSC (PROSC Products)
Background:	The function of this protein remains unknown. Alias Symbols: FLJ11861

Target Details

Protein Interaction Partner: UBC, ISOC1, MCTS1, TWF2, AHSA1, PDIA4, GTF3C4, NAE1, YWHAE, TUFM, SMS, PTMA, PRCP, PPP1R2, PAFAH1B2, MYO1E, HK1, HEXB, GSR, EIF4E, TBCB, CAPNS1, CAPN2, ATIC, ASNS, ASB6, TATDN1, NAGK, OGFOD1, STK26, UBXN1,
Protein Size: 275

Molecular Weight: 30 kDa

Gene ID: 11212

NCBI Accession: [NM_007198](#), [NP_009129](#)

UniProt: [O94903](#)

Application Details

Application Notes: Optimal working dilutions should be determined experimentally by the investigator.

Comment: Antigen size: 275 AA

Restrictions: For Research Use only

Handling

Format: Liquid

Concentration: Lot specific

Buffer: Liquid. Purified antibody supplied in 1x PBS buffer with 0.09 % (w/v) sodium azide and 2 % sucrose.

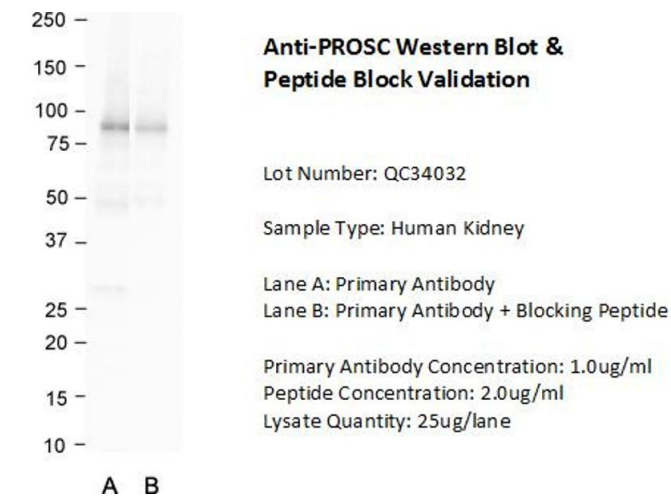
Preservative: Sodium azide

Precaution of Use: This product contains Sodium azide: a POISONOUS AND HAZARDOUS SUBSTANCE which should be handled by trained staff only.

Handling Advice: Avoid repeated freeze-thaw cycles.

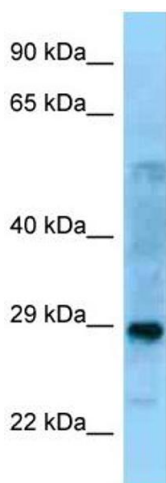
Storage: -20 °C

Storage Comment: For short term use, store at 2-8°C up to 1 week. For long term storage, store at -20°C in small aliquots to prevent freeze-thaw cycles.



Western Blotting

Image 1. Host: Rabbit Target Name: PROSC Sample Type: Human Kidney Lane A: Primary Antibody Lane B: Primary Antibody + Blocking Peptide Primary Antibody Concentration: 1.0 ug/ml Peptide Concentration: 2.0 ug/ml Lysate Quantity: 25 ug/lane



Western Blotting

Image 2. WB Suggested Anti-PROSC Antibody Titration: 1.0 ug/ml Positive Control: Fetal Lung