

Datasheet for ABIN2789118
anti-Uroplakin 3B antibody (C-Term)[Go to Product page](#)

1 Image

Overview

Quantity:	100 µL
Target:	Uroplakin 3B (UPK3B)
Binding Specificity:	C-Term
Reactivity:	Human
Host:	Rabbit
Clonality:	Polyclonal
Conjugate:	This Uroplakin 3B antibody is un-conjugated
Application:	Western Blotting (WB)

Product Details

Sequence:	SLYHALLQPV VAGGGPGAAA DRLLHGQALH DPPHPTQRGR HTAGGLQAWP
Predicted Reactivity:	Human: 100%
Characteristics:	This is a rabbit polyclonal antibody against UPK3B. It was validated on Western Blot.
Purification:	Affinity Purified

Target Details

Target:	Uroplakin 3B (UPK3B)
Alternative Name:	UPK3B (UPK3B Products)
Background:	UPK3B is a minor component of the apical plaques of mammalian urothelium that binds and dimerizes with uroplakin-1b (UPK1B, MIM 602380), one of the major conserved urothelium

Target Details

membrane proteins. The other major conserved integral membrane proteins of urothelial plaques are UPK1A.

Alias Symbols: FLJ32198, MGC10902, P35, UPIIIb

Protein Interaction Partner: UPK1B,

Protein Size: 320

Molecular Weight: 35 kDa

Gene ID: 80761

NCBI Accession: [NM_007234](#), [NP_009165](#)

UniProt: [O75935](#)

Application Details

Application Notes: Optimal working dilutions should be determined experimentally by the investigator.

Comment: Antigen size: 320 AA

Restrictions: For Research Use only

Handling

Format: Liquid

Concentration: Lot specific

Buffer: Liquid. Purified antibody supplied in 1x PBS buffer with 0.09 % (w/v) sodium azide and 2 % sucrose.

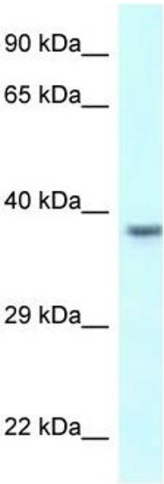
Preservative: Sodium azide

Precaution of Use: This product contains Sodium azide: a POISONOUS AND HAZARDOUS SUBSTANCE which should be handled by trained staff only.

Handling Advice: Avoid repeated freeze-thaw cycles.

Storage: -20 °C

Storage Comment: For short term use, store at 2-8°C up to 1 week. For long term storage, store at -20°C in small aliquots to prevent freeze-thaw cycles.



Western Blotting

Image 1. WB Suggested Anti-UPK3B Antibody Titration: 1.0 ug/ml Positive Control: 721_B Whole Cell