

Datasheet for ABIN2789134
anti-SH3BP1 antibody (N-Term)



[Go to Product page](#)

1 Image

Overview

Quantity:	100 µL
Target:	SH3BP1
Binding Specificity:	N-Term
Reactivity:	Human, Mouse, Rat, Cow, Guinea Pig, Horse, Dog
Host:	Rabbit
Clonality:	Polyclonal
Conjugate:	This SH3BP1 antibody is un-conjugated
Application:	Western Blotting (WB)

Product Details

Sequence:	QPLSRLSEEE LPAILKHKKS LQKLVDWNT LKSRLSQATK NSGSSQGLGG
Predicted Reactivity:	Cow: 86%, Dog: 92%, Guinea Pig: 86%, Horse: 85%, Human: 100%, Mouse: 86%, Rat: 93%
Characteristics:	This is a rabbit polyclonal antibody against SH3BP1. It was validated on Western Blot.
Purification:	Affinity Purified

Target Details

Target:	SH3BP1
Alternative Name:	SH3BP1 (SH3BP1 Products)
Background:	The function of this protein remains unknown. Alias Symbols: ARHGAP43

Target Details

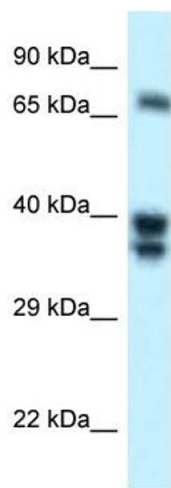
	Protein Interaction Partner: TRIP10, HECW2, CD2AP, Asap1, POT1, TERF1, UBC, SH3BP1, SYNJ1, RAC1, SRC, RHOA, CRK, HCK, ABL1, Protein Size: 621
Molecular Weight:	68 kDa
Gene ID:	23616
NCBI Accession:	NM_018957 , NP_061830
UniProt:	Q9Y3L3

Application Details

Application Notes:	Optimal working dilutions should be determined experimentally by the investigator.
Comment:	Antigen size: 621 AA
Restrictions:	For Research Use only

Handling

Format:	Liquid
Concentration:	Lot specific
Buffer:	Liquid. Purified antibody supplied in 1x PBS buffer with 0.09 % (w/v) sodium azide and 2 % sucrose.
Preservative:	Sodium azide
Precaution of Use:	This product contains Sodium azide: a POISONOUS AND HAZARDOUS SUBSTANCE which should be handled by trained staff only.
Handling Advice:	Avoid repeated freeze-thaw cycles.
Storage:	-20 °C
Storage Comment:	For short term use, store at 2-8°C up to 1 week. For long term storage, store at -20°C in small aliquots to prevent freeze-thaw cycles.



Western Blotting

Image 1. WB Suggested Anti-SH3BP1 Antibody Titration:
1.0 ug/ml Positive Control: 721_B Whole Cell SH3BP1 is supported by BioGPS gene expression data to be expressed in 721_B