

Datasheet for ABIN2789147
anti-CTPS2 antibody (N-Term)[Go to Product page](#)

2 Images

Overview

Quantity:	100 µL
Target:	CTPS2
Binding Specificity:	N-Term
Reactivity:	Human, Mouse, Rat, Dog, Horse, Cow, Pig, Rabbit, Zebrafish (Danio rerio), Guinea Pig
Host:	Rabbit
Clonality:	Polyclonal
Conjugate:	This CTPS2 antibody is un-conjugated
Application:	Western Blotting (WB), Immunohistochemistry (IHC)

Product Details

Sequence:	AKRENFCAIH VSLVPQLSAT GEQKTKPTQN SVRALRGLGL SPDLIVCRSS
Predicted Reactivity:	Cow: 100%, Dog: 100%, Guinea Pig: 93%, Horse: 100%, Human: 100%, Mouse: 100%, Pig: 100%, Rabbit: 100%, Rat: 100%, Zebrafish: 100%
Characteristics:	This is a rabbit polyclonal antibody against CTPS2. It was validated on Western Blot.
Purification:	Affinity Purified

Target Details

Target:	CTPS2
Alternative Name:	CTPS2 (CTPS2 Products)
Background:	The protein encoded by this gene catalyzes the formation of CTP from UTP with the

Target Details

concomitant deamination of glutamine to glutamate. This protein is the rate-limiting enzyme in the synthesis of cytosine nucleotides, which play an important role in various metabolic processes and provide the precursors necessary for the synthesis of RNA and DNA. Cancer cells that exhibit increased cell proliferation also exhibit an increased activity of this encoded protein. Thus, this protein is an attractive target for selective chemotherapy. Three alternatively spliced transcript variants encoding the same protein have been described for this gene.

Alias Symbols: DKFZp686C17207, FLJ43358, MGC32997

Protein Interaction Partner: CTPS2, SPG21, RNF2, LRSAM1, EHD4, EHD1, PLIN3, MTMR2, WARS, PRKDC, NUCB1, METTL1, KTN1, HSF1, GTF2I, DHPS, RPL37A, RPL23A, FGFR1, CTBP2, UBC, SUMO2, OTUD5,

Protein Size: 586

Molecular Weight: 64 kDa

Gene ID: 56474

NCBI Accession: [NM_175859](#), [NP_787055](#)

UniProt: [Q9NRF8](#)

Pathways: [Ribonucleoside Biosynthetic Process](#)

Application Details

Application Notes: Optimal working dilutions should be determined experimentally by the investigator.

Comment: Antigen size: 586 AA

Restrictions: For Research Use only

Handling

Format: Liquid

Concentration: Lot specific

Buffer: Liquid. Purified antibody supplied in 1x PBS buffer with 0.09 % (w/v) sodium azide and 2 % sucrose.

Preservative: Sodium azide

Precaution of Use: This product contains Sodium azide: a POISONOUS AND HAZARDOUS SUBSTANCE which should be handled by trained staff only.

Handling Advice: Avoid repeated freeze-thaw cycles.

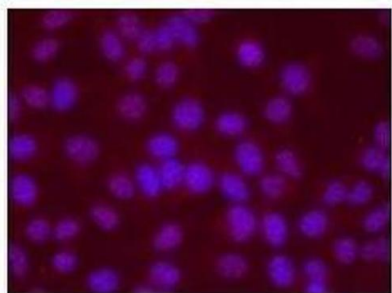
Handling

Storage: -20 °C

Storage Comment: For short term use, store at 2-8°C up to 1 week. For long term storage, store at -20°C in small aliquots to prevent freeze-thaw cycles.

Images

CTPS2



Red: CTPS2 Blue: DAPI

See IHC 1 Data and Customer Feedback for more Information



Immunohistochemistry

Image 1. Sample Type : Human Hep-2 cells Primary Antibody Dilution : 1:500 Secondary Antibody : Goat anti-rabbit-Alexa Fluor 568 Secondary Antibody Dilution : 1:400 Color/Signal Descriptions : Red: CTPS2 Blue: DAPI Gene Name : CTPS2 Submitted by : S. John Calise, Edward Chan Lab, University of Florida

Western Blotting

Image 2. WB Suggested Anti-CTPS2 Antibody Titration: 1.0 ug/ml Positive Control: Hela Whole Cell CTPS2 is supported by BioGPS gene expression data to be expressed in HeLa