

Datasheet for ABIN2789149
anti-DPEP2 antibody (C-Term)[Go to Product page](#)

1 Image

Overview

Quantity:	100 µL
Target:	DPEP2
Binding Specificity:	C-Term
Reactivity:	Human, Rat, Rabbit
Host:	Rabbit
Clonality:	Polyclonal
Conjugate:	This DPEP2 antibody is un-conjugated
Application:	Western Blotting (WB)

Product Details

Immunogen:	The immunogen is a synthetic peptide directed towards the C-terminal region of Human DPEP2
Sequence:	VFRQVEKVQE ENKWQSPLED KFPDEQLSSS CHSDLSRLRQ RQSLTSGQEL
Predicted Reactivity:	Human: 100%, Rabbit: 86%, Rat: 79%
Characteristics:	This is a rabbit polyclonal antibody against DPEP2. It was validated on Western Blot.
Purification:	Affinity Purified

Target Details

Target:	DPEP2
Alternative Name:	DPEP2 (DPEP2 Products)
Background:	DPEP2 belongs to the membrane-bound dipeptidase (EC 3.4.13.19) family. These enzymes

Target Details

hydrolyze a variety of dipeptides, including leukotriene D4, the beta-lactam ring of some antibiotics, and cystinyl-bis-glycine (cys-bis-gly) formed during glutathione degradation.

Protein Size: 399

Molecular Weight: 43 kDa

Gene ID: 64174

Application Details

Restrictions: For Research Use only

Handling

Format: Liquid

Concentration: 1 mg/mL

Buffer: Liquid. Purified antibody supplied in 1x PBS buffer with 0.09 % (w/v) sodium azide and 2 % sucrose.

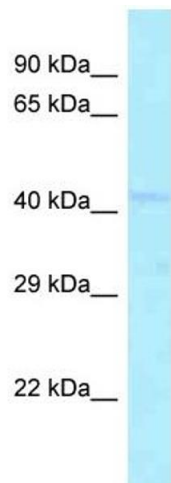
Preservative: Sodium azide

Precaution of Use: This product contains Sodium azide: a POISONOUS AND HAZARDOUS SUBSTANCE which should be handled by trained staff only.

Handling Advice: Avoid repeat freeze-thaw cycles.

Storage: -20 °C

Storage Comment: For short term use, store at 2-8°C up to 1 week. For long term storage, store at -20°C in small aliquots to prevent freeze-thaw cycles.



Western Blotting

Image 1. Host: Rabbit Target Name: DPEP2 Sample Type: OVCAR-3 Whole Cell lysates Antibody Dilution: 1.0ug/ml
DPEP2 is supported by BioGPS gene expression data to be expressed in OVCAR3