

Datasheet for ABIN2789153
anti-LPGAT1 antibody (C-Term)[Go to Product page](#)

1 Image

Overview

Quantity:	100 µL
Target:	LPGAT1
Binding Specificity:	C-Term
Reactivity:	Human, Guinea Pig, Pig, Cow, Dog, Horse, Rabbit, Rat
Host:	Rabbit
Clonality:	Polyclonal
Conjugate:	This LPGAT1 antibody is un-conjugated
Application:	Western Blotting (WB)

Product Details

Sequence:	KNGSPAGGDA KELDSKSKGL QWIIDTTIAY PKAEPIDIQT WILGYRKPTV
Predicted Reactivity:	Cow: 93%, Dog: 93%, Guinea Pig: 85%, Horse: 93%, Human: 100%, Pig: 100%, Rabbit: 93%, Rat: 93%
Characteristics:	This is a rabbit polyclonal antibody against LPGAT1. It was validated on Western Blot.
Purification:	Affinity Purified

Target Details

Target:	LPGAT1
Alternative Name:	LPGAT1 (LPGAT1 Products)
Background:	Acyl-CoA:lysophosphatidylglycerol (LPG) acyltransferase catalyzes the reacylation of LPG to

Target Details

phosphatidylglycerol, a membrane phospholipid that is an important precursor for the synthesis of cardiolipin.

Alias Symbols: FAM34A, FAM34A1, NET8

Protein Interaction Partner: CLN3, ELAVL1, UBC, UNC93B1,

Protein Size: 370

Molecular Weight: 41 kDa

Gene ID: 9926

NCBI Accession: [NM_014873](#), [NP_055688](#)

UniProt: [Q92604](#)

Application Details

Application Notes: Optimal working dilutions should be determined experimentally by the investigator.

Comment: Antigen size: 370 AA

Restrictions: For Research Use only

Handling

Format: Liquid

Concentration: Lot specific

Buffer: Liquid. Purified antibody supplied in 1x PBS buffer with 0.09 % (w/v) sodium azide and 2 % sucrose.

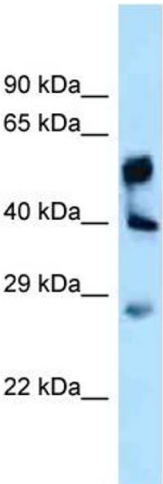
Preservative: Sodium azide

Precaution of Use: This product contains Sodium azide: a POISONOUS AND HAZARDOUS SUBSTANCE which should be handled by trained staff only.

Handling Advice: Avoid repeated freeze-thaw cycles.

Storage: -20 °C

Storage Comment: For short term use, store at 2-8°C up to 1 week. For long term storage, store at -20°C in small aliquots to prevent freeze-thaw cycles.



Rabbit Anti-LPGAT1 Antibody
Catalog Number: ARP62465
Lot Number: QC33659
Lane: Fetal Liver Lysate

Antibody Titration: 1.0µg/ml
Gel Concentration: 12%

Western Blotting

Image 1.