

Datasheet for ABIN2789156  
**anti-MRPL38 antibody (C-Term)**[Go to Product page](#)

## 1 Image

## Overview

Quantity:	100 µL
Target:	MRPL38
Binding Specificity:	C-Term
Reactivity:	Human, Mouse, Rat, Pig, Cow, Dog, Horse, Rabbit, Guinea Pig
Host:	Rabbit
Clonality:	Polyclonal
Conjugate:	This MRPL38 antibody is un-conjugated
Application:	Western Blotting (WB)

## Product Details

Immunogen:	The immunogen is a synthetic peptide directed towards the C-terminal region of Human MRPL38
Sequence:	YIFHQLLDMR EPVFEFVRPP PYHPKQKRFP HRQPLRYLDR YRDSHEPTYG
Predicted Reactivity:	Cow: 100%, Dog: 100%, Guinea Pig: 93%, Horse: 100%, Human: 100%, Mouse: 100%, Pig: 100%, Rabbit: 86%, Rat: 100%
Characteristics:	This is a rabbit polyclonal antibody against MRPL38. It was validated on Western Blot.
Purification:	Affinity Purified

## Target Details

Target:	MRPL38
---------	--------

## Target Details

Alternative Name:	MRPL38 ( <a href="#">MRPL38 Products</a> )
Background:	<p>Mammalian mitochondrial ribosomal proteins are encoded by nuclear genes and help in protein synthesis within the mitochondrion. Mitochondrial ribosomes (mitoribosomes) consist of a small 28S subunit and a large 39S subunit. They have an estimated 75 % protein to rRNA composition compared to prokaryotic ribosomes, where this ratio is reversed. Another difference between mammalian mitoribosomes and prokaryotic ribosomes is that the latter contain a 5S rRNA. Among different species, the proteins comprising the mitoribosome differ greatly in sequence, and sometimes in biochemical properties, which prevents easy recognition by sequence homology. This gene encodes a 39S subunit protein.</p> <p>Alias Symbols: FLJ13996, HSPC262, KIAA1863, MGC4810, MRP-L3, RPML3, L38MT, MRP-L38</p> <p>Protein Interaction Partner: DOCK8, HAUS2, TP53, PRMT6, NPM1, CSNK2A1, C1QBP, OGDH, MPV17, ILF3, ILF2, MRPL49, MRPL21, MRPL52, MRPL45, TMEM177, MRPL57, MRPL44, MRPL9, MRPL11, MRPL32, MRPL40, MRPS9, MRPL14, TSR1, MRPL16, MRPL50, MRPL39, MRPL51, MRPL37, MRPL15, MRPL13, FLOT1, MRPL19, F</p> <p>Protein Size: 380</p>
Molecular Weight:	44 kDa
Gene ID:	64978
NCBI Accession:	<a href="#">NM_032478</a> , <a href="#">NP_115867</a>
UniProt:	<a href="#">Q96DV4</a>

## Application Details

Application Notes:	Optimal working dilutions should be determined experimentally by the investigator.
Comment:	Antigen size: 380 AA
Restrictions:	For Research Use only

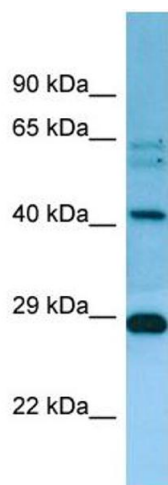
## Handling

Format:	Liquid
Concentration:	Lot specific
Buffer:	Liquid. Purified antibody supplied in 1x PBS buffer with 0.09 % (w/v) sodium azide and 2 % sucrose.
Preservative:	Sodium azide

## Handling

Precaution of Use:	This product contains Sodium azide: a POISONOUS AND HAZARDOUS SUBSTANCE which should be handled by trained staff only.
Handling Advice:	Avoid repeated freeze-thaw cycles.
Storage:	-20 °C
Storage Comment:	For short term use, store at 2-8°C up to 1 week. For long term storage, store at -20°C in small aliquots to prevent freeze-thaw cycles.

## Images



**Western Blotting**

**Image 1.** WB Suggested Anti-MRPL38 Antibody Titration:  
1.0 ug/ml Positive Control: Jurkat Whole Cell