

Datasheet for ABIN2789157  
**anti-MRPL40 antibody (Middle Region)**



[Go to Product page](#)

1 Image

## Overview

Quantity:	100 µL
Target:	MRPL40
Binding Specificity:	Middle Region
Reactivity:	Human, Mouse, Rat, Guinea Pig, Horse, Rabbit
Host:	Rabbit
Clonality:	Polyclonal
Conjugate:	This MRPL40 antibody is un-conjugated
Application:	Western Blotting (WB)

## Product Details

Sequence:	TPLKFLDKAR ERPQVELTFE ETERRALLLK KWSLYKQQR KMERDTIRAM
Predicted Reactivity:	Guinea Pig: 77%, Horse: 79%, Human: 100%, Mouse: 75%, Rabbit: 77%, Rat: 83%
Characteristics:	This is a rabbit polyclonal antibody against MRPL40. It was validated on Western Blot.
Purification:	Affinity Purified

## Target Details

Target:	MRPL40
Alternative Name:	MRPL40 ( <a href="#">MRPL40 Products</a> )
Background:	Mammalian mitochondrial ribosomal proteins are encoded by nuclear genes and help in protein synthesis within the mitochondrion. Mitochondrial ribosomes (mitoribosomes) consist of a

## Target Details

small 28S subunit and a large 39S subunit. They have an estimated 75 % protein to rRNA composition compared to prokaryotic ribosomes, where this ratio is reversed. Another difference between mammalian mitoribosomes and prokaryotic ribosomes is that the latter contain a 5S rRNA. Among different species, the proteins comprising the mitoribosome differ greatly in sequence, and sometimes in biochemical properties, which prevents easy recognition by sequence homology. This gene encodes a 39S subunit protein. Deletions in this gene may contribute to the etiology of velo-cardio-facial syndrome and DiGeorge syndrome.

Alias Symbols: FLJ41774, MGC9400, MRP-L22, NLVCF, URIM

Protein Interaction Partner: TFCP2, TRIM27, KRT31, NOTCH2NL, KRTAP10-3, CEP57, UPF2, MMS19, MRPL21, MRPL52, MRPL43, MRPL24, MRPL9, MRPL11, MRPL32, MRPL38, MRPS9, MRPL14, TSR1, MRPL16, MRPL50, MRPL39, ATP6V1D, MRPL51, MRPL37, MRPL2, MRPL15, MRPL42, SCFD1, ZMPSTE24, HNRNPR, MRPL19, TAP

Protein Size: 206

Molecular Weight: 23 kDa

Gene ID: 64976

NCBI Accession: [NM\\_002946](#), [NP\\_002937](#)

UniProt: [P15927](#)

## Application Details

Application Notes: Optimal working dilutions should be determined experimentally by the investigator.

Comment: Antigen size: 206 AA

Restrictions: For Research Use only

## Handling

Format: Liquid

Concentration: Lot specific

Buffer: Liquid. Purified antibody supplied in 1x PBS buffer with 0.09 % (w/v) sodium azide and 2 % sucrose.

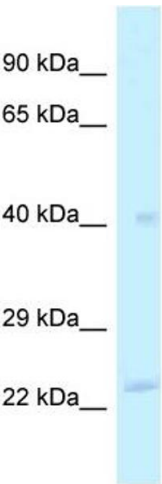
Preservative: Sodium azide

Precaution of Use: This product contains Sodium azide: a POISONOUS AND HAZARDOUS SUBSTANCE which should be handled by trained staff only.

Handling

Handling Advice:	Avoid repeated freeze-thaw cycles.
Storage:	-20 °C
Storage Comment:	For short term use, store at 2-8°C up to 1 week. For long term storage, store at -20°C in small aliquots to prevent freeze-thaw cycles.

Images



**Western Blotting**

**Image 1.** WB Suggested Anti-MRPL40 Antibody Titration:  
1.0 ug/ml Positive Control: Fetal Liver