

Datasheet for ABIN2789164
anti-EDEM3 antibody (C-Term)



[Go to Product page](#)

1 Image

Overview

Quantity:	100 µL
Target:	EDEM3
Binding Specificity:	C-Term
Reactivity:	Human, Rat, Mouse, Dog, Horse, Pig, Cow
Host:	Rabbit
Clonality:	Polyclonal
Conjugate:	This EDEM3 antibody is un-conjugated
Application:	Western Blotting (WB)

Product Details

Sequence:	NAASISPSEQ TSNPTENHET TNLNGECTDL DNQLQEQSET EEDSNPNVSW
Predicted Reactivity:	Cow: 93%, Dog: 100%, Horse: 100%, Human: 100%, Mouse: 93%, Pig: 79%, Rat: 93%
Characteristics:	This is a rabbit polyclonal antibody against EDEM3. It was validated on Western Blot.
Purification:	Affinity Purified

Target Details

Target:	EDEM3
Alternative Name:	EDEM3 (EDEM3 Products)
Background:	Quality control in the endoplasmic reticulum (ER) ensures that only properly folded proteins are retained in the cell through recognition and degradation of misfolded or unassembled proteins.

Target Details

EDEM3 belongs to a group of proteins that accelerate degradation of misfolded glycoproteins in the ER.

Alias Symbols: C1orf22

Protein Interaction Partner: env, FBXO6, UBC, Zwint,

Protein Size: 889

Molecular Weight: 98 kDa

Gene ID: 80267

NCBI Accession: [NM_001039508, NP_001034597](#)

Pathways: [SARS-CoV-2 Protein Interactome](#)

Application Details

Application Notes: Optimal working dilutions should be determined experimentally by the investigator.

Comment: Antigen size: 889 AA

Restrictions: For Research Use only

Handling

Format: Liquid

Concentration: Lot specific

Buffer: Liquid. Purified antibody supplied in 1x PBS buffer with 0.09 % (w/v) sodium azide and 2 % sucrose.

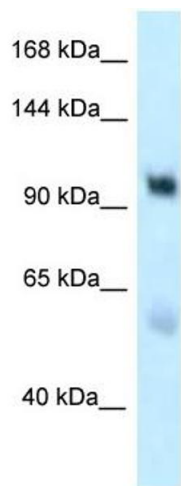
Preservative: Sodium azide

Precaution of Use: This product contains Sodium azide: a POISONOUS AND HAZARDOUS SUBSTANCE which should be handled by trained staff only.

Handling Advice: Avoid repeated freeze-thaw cycles.

Storage: -20 °C

Storage Comment: For short term use, store at 2-8°C up to 1 week. For long term storage, store at -20°C in small aliquots to prevent freeze-thaw cycles.



Western Blotting

Image 1. WB Suggested Anti-EDEM3 Antibody Titration:
1.0 ug/ml Positive Control: Placenta