



[Go to Product page](#)

Datasheet for ABIN2789176  
**anti-FCRLB antibody (N-Term)**

1 Image

### Overview

Quantity:	100 µL
Target:	FCRLB
Binding Specificity:	N-Term
Reactivity:	Human, Mouse, Rat, Cow, Pig, Rabbit, Guinea Pig
Host:	Rabbit
Clonality:	Polyclonal
Conjugate:	This FCRLB antibody is un-conjugated
Application:	Western Blotting (WB)

### Product Details

Sequence:	DKVVYKLYHY HDGQAVRYFH SSANYTVLQA RASDSGRYQC SGTMRIPVES
Predicted Reactivity:	Cow: 100%, Guinea Pig: 93%, Human: 100%, Mouse: 93%, Pig: 100%, Rabbit: 100%, Rat: 100%
Characteristics:	This is a rabbit polyclonal antibody against FCRLB. It was validated on Western Blot.
Purification:	Affinity Purified

### Target Details

Target:	FCRLB
Alternative Name:	FCRLB ( <a href="#">FCRLB Products</a> )
Background:	FCRL2 belongs to the Fc receptor family. Fc receptors are involved in phagocytosis, antibody-dependent cell cytotoxicity, immediate hypersensitivity, and transcytosis of immunoglobulins

## Target Details

---

via their ability to bind immunoglobulin (Ig) constant regions .

Alias Symbols: FCRL2, FCRLM2, FCRLY, FLJ31052, FREB-2, FcRY, RP11-474116.6

Protein Interaction Partner: UBC,

Protein Size: 426

---

Molecular Weight: 47 kDa

---

Gene ID: 127943

---

NCBI Accession: [NM\\_001002901](#), [NP\\_001002901](#)

---

UniProt: [Q6BAA4](#)

## Application Details

---

Application Notes: Optimal working dilutions should be determined experimentally by the investigator.

---

Comment: Antigen size: 426 AA

---

Restrictions: For Research Use only

## Handling

---

Format: Liquid

---

Concentration: Lot specific

---

Buffer: Liquid. Purified antibody supplied in 1x PBS buffer with 0.09 % (w/v) sodium azide and 2 % sucrose.

---

Preservative: Sodium azide

---

Precaution of Use: This product contains Sodium azide: a POISONOUS AND HAZARDOUS SUBSTANCE which should be handled by trained staff only.

---

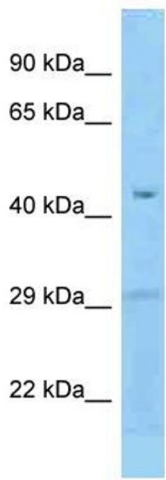
Handling Advice: Avoid repeated freeze-thaw cycles.

---

Storage: -20 °C

---

Storage Comment: For short term use, store at 2-8°C up to 1 week. For long term storage, store at -20°C in small aliquots to prevent freeze-thaw cycles.



Rabbit Anti-FCRLB Antibody  
Catalog Number: ARP62552  
Lot Number: QC34062  
Lane: Fetal Liver Lysate

Antibody Titration: 1.0µg/ml  
Gel Concentration: 12%

### Western Blotting

Image 1.