

Datasheet for ABIN2789189
anti-PPP4R1 antibody (Middle Region)[Go to Product page](#)

1 Image

Overview

Quantity:	100 µL
Target:	PPP4R1
Binding Specificity:	Middle Region
Reactivity:	Human, Horse, Rabbit, Dog, Pig
Host:	Rabbit
Clonality:	Polyclonal
Conjugate:	This PPP4R1 antibody is un-conjugated
Application:	Western Blotting (WB)

Product Details

Sequence:	EDHAAEASGK PLGEISVPLD SSSLCTLSSE SHQEASNEN DKKPGNYKSM
Predicted Reactivity:	Dog: 93%, Horse: 100%, Human: 100%, Pig: 85%, Rabbit: 79%
Characteristics:	This is a rabbit polyclonal antibody against PPP4R1. It was validated on Western Blot.
Purification:	Affinity Purified

Target Details

Target:	PPP4R1
Alternative Name:	PPP4R1 (PPP4R1 Products)
Background:	PPP4R1 is a regulatory subunit of serine/threonine-protein phosphatase 4. PPP4R1 may play a role in regulation of cell division in renal glomeruli. The PPP4C-PPP4R1 PP4 complex may play

Target Details

a role in dephosphorylation and regulation of HDAC3.

Alias Symbols: PP4(Rmeg), PP4R1

Protein Interaction Partner: TRAF6, TRAF2, POLR2C, POLR2A, MAP4, MTA2, SPTAN1, EHBP1L1, GPHN, HNRNPR, UBC, CEP63, DISC1, PPP4C, HDAC3,

Protein Size: 950

Molecular Weight: 107 kDa

Gene ID: 9989

NCBI Accession: [NM_001042388](#), [NP_001035847](#)

UniProt: [Q8TF05](#)

Application Details

Application Notes: Optimal working dilutions should be determined experimentally by the investigator.

Comment: Antigen size: 950 AA

Restrictions: For Research Use only

Handling

Format: Liquid

Concentration: Lot specific

Buffer: Liquid. Purified antibody supplied in 1x PBS buffer with 0.09 % (w/v) sodium azide and 2 % sucrose.

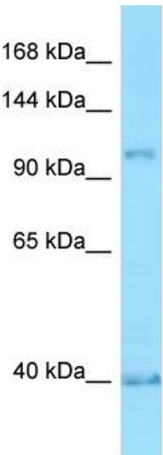
Preservative: Sodium azide

Precaution of Use: This product contains Sodium azide: a POISONOUS AND HAZARDOUS SUBSTANCE which should be handled by trained staff only.

Handling Advice: Avoid repeated freeze-thaw cycles.

Storage: -20 °C

Storage Comment: For short term use, store at 2-8°C up to 1 week. For long term storage, store at -20°C in small aliquots to prevent freeze-thaw cycles.



Host: Rabbit
Target Name: PPP4R1
Sample Tissue: HT1080 Cell Lysate
Antibody Dilution: 1.0µg/ml

Western Blotting

Image 1. Host: Rabbit

Target Name: PPP4R1

Antibody Dilution: 1.0ug/ml

Sample Tissue: HT1080 cell lysate