



[Go to Product page](#)

Datasheet for ABIN2789199

## anti-DHRS4L2 antibody (C-Term)

### 1 Image

#### Overview

Quantity:	100 µL
Target:	DHRS4L2
Binding Specificity:	C-Term
Reactivity:	Human
Host:	Rabbit
Clonality:	Polyclonal
Conjugate:	This DHRS4L2 antibody is un-conjugated
Application:	Western Blotting (WB)

#### Product Details

Sequence:	NVSKTALLGL NNTLAIELAP RNIRVNCLHL DLSRLASAGC SGWTRKKRKA
Predicted Reactivity:	Human: 100%
Characteristics:	This is a rabbit polyclonal antibody against DHRS4L2. It was validated on Western Blot.
Purification:	Affinity Purified

#### Target Details

Target:	DHRS4L2
Alternative Name:	DHRS4L2 ( <a href="#">DHRS4L2 Products</a> )
Background:	This gene encodes a member of the short chain dehydrogenase reductase family. The encoded protein may be an NADPH dependent retinol oxidoreductase. Alternate splicing results in

## Target Details

---

multiple transcript variants.  
Alias Symbols: MGC905, SDR25C3  
Protein Interaction Partner: UBC,  
Protein Size: 230

Molecular Weight: 25 kDa

Gene ID: 317749

NCBI Accession: [NM\\_198083](#), [NP\\_932349](#)

UniProt: [Q6PKH6](#)

## Application Details

---

Application Notes: Optimal working dilutions should be determined experimentally by the investigator.

Comment: Antigen size: 230 AA

Restrictions: For Research Use only

## Handling

---

Format: Liquid

Concentration: Lot specific

Buffer: Liquid. Purified antibody supplied in 1x PBS buffer with 0.09 % (w/v) sodium azide and 2 % sucrose.

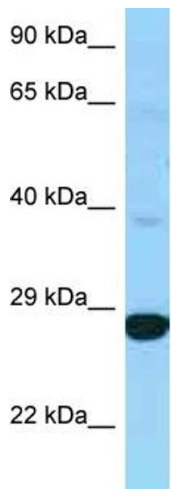
Preservative: Sodium azide

Precaution of Use: This product contains Sodium azide: a POISONOUS AND HAZARDOUS SUBSTANCE which should be handled by trained staff only.

Handling Advice: Avoid repeated freeze-thaw cycles.

Storage: -20 °C

Storage Comment: For short term use, store at 2-8°C up to 1 week. For long term storage, store at -20°C in small aliquots to prevent freeze-thaw cycles.



Rabbit Anti-DHRS4L2 Antibody  
Catalog Number: ARP62652  
Lot Number: QC34072  
Lane: 721\_B Cell Lysate

Antibody Titration: 1.0µg/ml  
Gel Concentration: 12%

### Western Blotting

Image 1.