



[Go to Product page](#)

Datasheet for ABIN2789205
anti-LIMCH1 antibody (C-Term)

1 Image

Overview

Quantity:	100 µL
Target:	LIMCH1
Binding Specificity:	C-Term
Reactivity:	Human, Mouse, Dog, Rabbit, Rat
Host:	Rabbit
Clonality:	Polyclonal
Conjugate:	This LIMCH1 antibody is un-conjugated
Application:	Western Blotting (WB)

Product Details

Sequence:	EDVKPKTLPL DKSINHQIES PSERRKKSPPR EHFQAGPFSP CSPTPPGQSP
Predicted Reactivity:	Dog: 100%, Human: 100%, Mouse: 85%, Rabbit: 92%, Rat: 92%
Characteristics:	This is a rabbit polyclonal antibody against LIMCH1. It was validated on Western Blot.
Purification:	Affinity Purified

Target Details

Target:	LIMCH1
Alternative Name:	LIMCH1 (LIMCH1 Products)
Background:	The function of this protein remains unknown. Alias Symbols: DKFZp434I0312, DKFZp686A01247, DKFZp686B2470, DKFZp686G18243,

Target Details

DKFZp686G2094, DKFZp781C1754, DKFZp781I1455, LIMCH1A, LMO7B, MGC72127

Protein Interaction Partner: RPA3, RPA2, RPA1, KPNA1, GABPA, TRMT61A, DIABLO, CUTC, NPM1, HUWE1, APP, SH3KBP1, ELAVL1,

Protein Size: 1083

Molecular Weight: 121 kDa

Gene ID: 22998

NCBI Accession: [NM_014988](#), [NP_055803](#)

UniProt: [Q9UPQ0](#)

Application Details

Application Notes: Optimal working dilutions should be determined experimentally by the investigator.

Comment: Antigen size: 1083 AA

Restrictions: For Research Use only

Handling

Format: Liquid

Concentration: Lot specific

Buffer: Liquid. Purified antibody supplied in 1x PBS buffer with 0.09 % (w/v) sodium azide and 2 % sucrose.

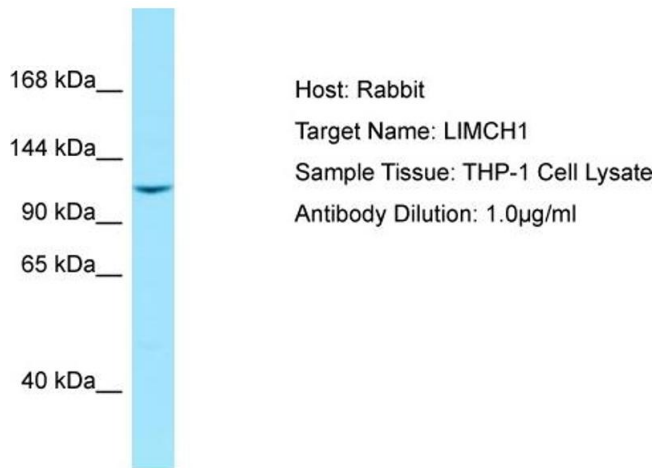
Preservative: Sodium azide

Precaution of Use: This product contains Sodium azide: a POISONOUS AND HAZARDOUS SUBSTANCE which should be handled by trained staff only.

Handling Advice: Avoid repeated freeze-thaw cycles.

Storage: -20 °C

Storage Comment: For short term use, store at 2-8°C up to 1 week. For long term storage, store at -20°C in small aliquots to prevent freeze-thaw cycles.



Host: Rabbit
Target Name: LIMCH1
Sample Tissue: THP-1 Cell Lysate
Antibody Dilution: 1.0µg/ml

Western Blotting

Image 1. Host: Rabbit

Target Name: LIMCH1

Antibody Dilution: 1.0ug/ml

Sample Tissue: THP-1 cell lysate