

Datasheet for ABIN2789210
anti-MPZL3 antibody (C-Term)



[Go to Product page](#)

1 Image

Overview

Quantity:	100 µL
Target:	MPZL3
Binding Specificity:	C-Term
Reactivity:	Human, Mouse, Horse, Rat, Cow, Dog, Guinea Pig, Pig
Host:	Rabbit
Clonality:	Polyclonal
Conjugate:	This MPZL3 antibody is un-conjugated
Application:	Western Blotting (WB)

Product Details

Sequence:	ALLLVRMGRK AAGLKKRSRS GYKKSSIEVS DDTDQEEEEA CMARLCVRCA
Predicted Reactivity:	Cow: 93%, Dog: 93%, Guinea Pig: 86%, Horse: 86%, Human: 100%, Mouse: 86%, Pig: 93%, Rat: 93%
Characteristics:	This is a rabbit polyclonal antibody against MPZL3. It was validated on Western Blot.
Purification:	Affinity Purified

Target Details

Target:	MPZL3
Alternative Name:	MPZL3 (MPZL3 Products)
Background:	The function of this protein remains unknown.

Target Details

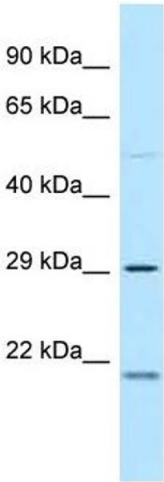
	Alias Symbols: - Protein Interaction Partner: MPZL2, Protein Size: 235
Molecular Weight:	26 kDa
Gene ID:	196264
NCBI Accession:	NM_198275 , NP_938016
UniProt:	Q6UWV2

Application Details

Application Notes:	Optimal working dilutions should be determined experimentally by the investigator.
Comment:	Antigen size: 235 AA
Restrictions:	For Research Use only

Handling

Format:	Liquid
Concentration:	Lot specific
Buffer:	Liquid. Purified antibody supplied in 1x PBS buffer with 0.09 % (w/v) sodium azide and 2 % sucrose.
Preservative:	Sodium azide
Precaution of Use:	This product contains Sodium azide: a POISONOUS AND HAZARDOUS SUBSTANCE which should be handled by trained staff only.
Handling Advice:	Avoid repeated freeze-thaw cycles.
Storage:	-20 °C
Storage Comment:	For short term use, store at 2-8°C up to 1 week. For long term storage, store at -20°C in small aliquots to prevent freeze-thaw cycles.



Western Blotting

Image 1. WB Suggested Anti-MPZL3 Antibody Titration:
1.0 ug/ml Positive Control: Fetal Brain