

Datasheet for ABIN2789212
anti-MRPL3 antibody (N-Term)



[Go to Product page](#)

1 Image

Overview

Quantity:	100 µL
Target:	MRPL3
Binding Specificity:	N-Term
Reactivity:	Human, Mouse, Rat, Cow, Rabbit, Dog, Guinea Pig, Horse
Host:	Rabbit
Clonality:	Polyclonal
Conjugate:	This MRPL3 antibody is un-conjugated
Application:	Western Blotting (WB)

Product Details

Sequence:	MPLWTKDGQK HVVTLLQVQD CHVLKYTSKE NCNGKMATLS VGGKTVSRFR
Predicted Reactivity:	Cow: 86%, Dog: 86%, Guinea Pig: 93%, Horse: 86%, Human: 100%, Mouse: 79%, Rabbit: 93%, Rat: 93%
Characteristics:	This is a rabbit polyclonal antibody against MRPL3. It was validated on Western Blot.
Purification:	Affinity Purified

Target Details

Target:	MRPL3
Alternative Name:	MRPL3 (MRPL3 Products)
Background:	Mammalian mitochondrial ribosomal proteins are encoded by nuclear genes and help in protein

Target Details

synthesis within the mitochondrion. Mitochondrial ribosomes (mitoribosomes) consist of a small 28S subunit and a large 39S subunit. They have an estimated 75 % protein to rRNA composition compared to prokaryotic ribosomes, where this ratio is reversed. Another difference between mammalian mitoribosomes and prokaryotic ribosomes is that the latter contain a 5S rRNA. Among different species, the proteins comprising the mitoribosome differ greatly in sequence, and sometimes in biochemical properties, which prevents easy recognition by sequence homology. This gene encodes a 39S subunit protein that belongs to the L3P ribosomal protein family. A pseudogene corresponding to this gene is found on chromosome 13q.

Alias Symbols: MRL3, RPML3

Protein Interaction Partner: UBC, MRPS27, mug82, ICT1, C1QBP, MRPL55, MRPL10, MRPL52, MRPL9, MRPL41, MRPS9, MRPL17, MRPL39, MRPL4, MRPL13, MRPL42, MRPL46, MRPL19, RPS18, RPS15, MRPL12, MRPL23, NDUFS3, APP, CAND1,

Protein Size: 348

Molecular Weight: 38 kDa

Gene ID: 11222

NCBI Accession: [NM_007208](#), [NP_009139](#)

UniProt: [P09001](#)

Application Details

Application Notes: Optimal working dilutions should be determined experimentally by the investigator.

Comment: Antigen size: 348 AA

Restrictions: For Research Use only

Handling

Format: Liquid

Concentration: Lot specific

Buffer: Liquid. Purified antibody supplied in 1x PBS buffer with 0.09 % (w/v) sodium azide and 2 % sucrose.

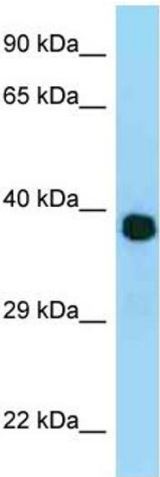
Preservative: Sodium azide

Precaution of Use: This product contains Sodium azide: a POISONOUS AND HAZARDOUS SUBSTANCE which

Handling

	should be handled by trained staff only.
Handling Advice:	Avoid repeated freeze-thaw cycles.
Storage:	-20 °C
Storage Comment:	For short term use, store at 2-8°C up to 1 week. For long term storage, store at -20°C in small aliquots to prevent freeze-thaw cycles.

Images



Western Blotting

Image 1. WB Suggested Anti-MRPL3 Antibody Titration: 1.0 ug/ml Positive Control: Placenta