

Datasheet for ABIN2789213
anti-MRPL43 antibody (N-Term)[Go to Product page](#)

1 Image

Overview

Quantity:	100 µL
Target:	MRPL43
Binding Specificity:	N-Term
Reactivity:	Human, Mouse, Rat, Cow, Guinea Pig, Horse
Host:	Rabbit
Clonality:	Polyclonal
Conjugate:	This MRPL43 antibody is un-conjugated
Application:	Western Blotting (WB)

Product Details

Sequence:	PSRFLASVLH NGLGRYVQQL QRLSFSVSRD GASSRGAREF VEREVIDFAR
Predicted Reactivity:	Cow: 79%, Guinea Pig: 79%, Horse: 79%, Human: 100%, Mouse: 79%, Rat: 83%
Characteristics:	This is a rabbit polyclonal antibody against MRPL43. It was validated on Western Blot.
Purification:	Affinity Purified

Target Details

Target:	MRPL43
Alternative Name:	MRPL43 (MRPL43 Products)
Background:	Mammalian mitochondrial ribosomal proteins are encoded by nuclear genes and help in protein synthesis within the mitochondrion. Mitochondrial ribosomes (mitoribosomes) consist of a

Target Details

small 28S subunit and a large 39S subunit. They have an estimated 75 % protein to rRNA composition compared to prokaryotic ribosomes, where this ratio is reversed. Another difference between mammalian mitoribosomes and prokaryotic ribosomes is that the latter contain a 5S rRNA. Among different species, the proteins comprising the mitoribosome differ greatly in sequence, and sometimes in biochemical properties, which prevents easy recognition by sequence homology. This gene encodes a 39S subunit protein. This gene and the gene for a semaphorin class 4 protein (SEMA4G) overlap at map location 10q24.31 and are transcribed in opposite directions.

Alias Symbols: MGC17989, MGC48892, bMRP36a

Protein Interaction Partner: FXR2, MDM2, SRPK1, NPM1, VCAM1, ITGA4, RPS18, NDUFA2, MRPL40, MRPL47, LAMTOR3, CAND1, COPS5, UBC, Ybx1, ICT1, DDX56, ARRB2,

Protein Size: 215

Molecular Weight:	23 kDa
-------------------	--------

Gene ID:	84545
----------	-------

NCBI Accession:	NM_176792 , NP_789762
-----------------	---

UniProt:	Q8N983
----------	------------------------

Application Details

Application Notes:	Optimal working dilutions should be determined experimentally by the investigator.
--------------------	--

Comment:	Antigen size: 215 AA
----------	----------------------

Restrictions:	For Research Use only
---------------	-----------------------

Handling

Format:	Liquid
---------	--------

Concentration:	Lot specific
----------------	--------------

Buffer:	Liquid. Purified antibody supplied in 1x PBS buffer with 0.09 % (w/v) sodium azide and 2 % sucrose.
---------	---

Preservative:	Sodium azide
---------------	--------------

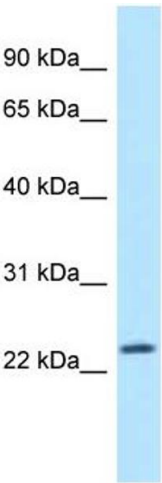
Precaution of Use:	This product contains Sodium azide: a POISONOUS AND HAZARDOUS SUBSTANCE which should be handled by trained staff only.
--------------------	--

Handling Advice:	Avoid repeated freeze-thaw cycles.
------------------	------------------------------------

Handling

Storage:	-20 °C
Storage Comment:	For short term use, store at 2-8°C up to 1 week. For long term storage, store at -20°C in small aliquots to prevent freeze-thaw cycles.

Images



Western Blotting

Image 1. WB Suggested Anti-MRPL43 Antibody Titration:
1.0 ug/ml Positive Control: HepG2 Whole Cell