

Datasheet for ABIN2789215  
**anti-MRPS9 antibody (C-Term)**



[Go to Product page](#)

1 Image

## Overview

|                      |                                      |
|----------------------|--------------------------------------|
| Quantity:            | 100 µL                               |
| Target:              | MRPS9                                |
| Binding Specificity: | C-Term                               |
| Reactivity:          | Human, Rat, Dog, Pig                 |
| Host:                | Rabbit                               |
| Clonality:           | Polyclonal                           |
| Conjugate:           | This MRPS9 antibody is un-conjugated |
| Application:         | Western Blotting (WB)                |

## Product Details

|                       |   |
|-----------------------|---|
| Sequence:             | TLESKKQLIE PVQYDEQGMA FSKSEGKRKT AKAEAIVYKH GSGRIKVNGI                                |
| Predicted Reactivity: | Dog: 86%, Human: 100%, Pig: 86%, Rat: 86%   |
| Characteristics:      | This is a rabbit polyclonal antibody against MRPS9. It was validated on Western Blot. |
| Purification:         | Affinity Purified   |

## Target Details

|                   |  |
|-------------------|--|
| Target:           | MRPS9  |
| Alternative Name: | MRPS9 ( <a href="#">MRPS9 Products</a> )   |
| Background:       | Mammalian mitochondrial ribosomal proteins are encoded by nuclear genes and help in protein synthesis within the mitochondrion. Mitochondrial ribosomes (mitoribosomes) consist of a |

## Target Details

small 28S subunit and a large 39S subunit. They have an estimated 75 % protein to rRNA composition compared to prokaryotic ribosomes, where this ratio is reversed. Another difference between mammalian mitoribosomes and prokaryotic ribosomes is that the latter contain a 5S rRNA. Among different species, the proteins comprising the mitoribosome differ greatly in sequence, and sometimes in biochemical properties, which prevents easy recognition by sequence homology. This gene encodes a 28S subunit protein.

Alias Symbols: MRP-S9, RPMS9, S9mt

Protein Interaction Partner: CEP250, TP53, SUMO2, HECW2, SOX2, rev, UBC, C1QBP, ESR1, LAMTOR3, SLC3A2, SDHA, RPS18, MRPL12, MRPL23, HNRNPM, ILF3, HNRNPC, EWSR1, MRPL21, MRPL55, MRPL32, MRPL38, MRPL40, MRPL41, MRPS26, MRPS25, NPLOC4, MRPL50, MRPS21, MRPL39, MRPS2, MRPS7, MRPS16, MRPL1

Protein Size: 396

Molecular Weight: 44 kDa

Gene ID: 64965

NCBI Accession: [NM\\_182640](#), [NP\\_872578](#)

UniProt: [P82933](#)

## Application Details

Application Notes: Optimal working dilutions should be determined experimentally by the investigator.

Comment: Antigen size: 396 AA

Restrictions: For Research Use only

## Handling

Format: Liquid

Concentration: Lot specific

Buffer: Liquid. Purified antibody supplied in 1x PBS buffer with 0.09 % (w/v) sodium azide and 2 % sucrose.

Preservative: Sodium azide

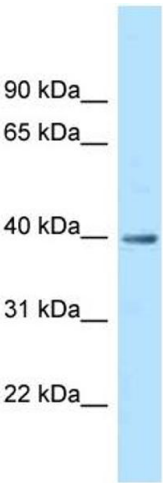
Precaution of Use: This product contains Sodium azide: a POISONOUS AND HAZARDOUS SUBSTANCE which should be handled by trained staff only.

Handling Advice: Avoid repeated freeze-thaw cycles.

Handling

|                  |   |
|------------------|---|
| Storage:         | -20 °C  |
| Storage Comment: | For short term use, store at 2-8°C up to 1 week. For long term storage, store at -20°C in small aliquots to prevent freeze-thaw cycles. |

Images



Western Blotting

**Image 1.** WB Suggested Anti-MRPS9 Antibody Titration: 1.0 ug/ml Positive Control: Fetal Heart