

Datasheet for ABIN2789220
anti-SLAMF1 antibody (C-Term)



[Go to Product page](#)

1 Image

Overview

Quantity:	100 µL
Target:	SLAMF1
Binding Specificity:	C-Term
Reactivity:	Human, Pig
Host:	Rabbit
Clonality:	Polyclonal
Conjugate:	This SLAMF1 antibody is un-conjugated
Application:	Western Blotting (WB)

Product Details

Sequence:	GKTNHYQTTV EKKSITIY AQ VQKPGPLQKK LDSFPAQDPC TTIYVAATEP
Predicted Reactivity:	Human: 100%, Pig: 93%
Characteristics:	This is a rabbit polyclonal antibody against SLAMF1. It was validated on Western Blot.
Purification:	Affinity Purified

Target Details

Target:	SLAMF1
Alternative Name:	SLAMF1 (SLAMF1 Products)
Background:	The function of this protein remains unknown. Alias Symbols: CD150, CDw150, SLAM

Target Details

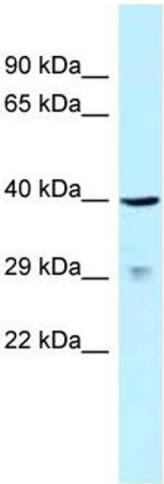
	Protein Interaction Partner: UBC, SLAMF1, SH2D1B, SH2D1A, PTPN11, FGR, FYN, Sh2d1b1, PTPRC, INPP5D, Protein Size: 335
Molecular Weight:	37 kDa
Gene ID:	6504
NCBI Accession:	NM_003037 , NP_003028
UniProt:	B2RAL4

Application Details

Application Notes:	Optimal working dilutions should be determined experimentally by the investigator.
Comment:	Antigen size: 335 AA
Restrictions:	For Research Use only

Handling

Format:	Liquid
Concentration:	Lot specific
Buffer:	Liquid. Purified antibody supplied in 1x PBS buffer with 0.09 % (w/v) sodium azide and 2 % sucrose.
Preservative:	Sodium azide
Precaution of Use:	This product contains Sodium azide: a POISONOUS AND HAZARDOUS SUBSTANCE which should be handled by trained staff only.
Handling Advice:	Avoid repeated freeze-thaw cycles.
Storage:	-20 °C
Storage Comment:	For short term use, store at 2-8°C up to 1 week. For long term storage, store at -20°C in small aliquots to prevent freeze-thaw cycles.



Western Blotting

Image 1. WB Suggested Anti-SLAMF1 Antibody Titration: 1.0 ug/ml Positive Control: 721_B Whole Cell SLAMF1 is supported by BioGPS gene expression data to be expressed in 721_B