

Datasheet for ABIN2789226
anti-TBC1D20 antibody (C-Term)[Go to Product page](#)

1 Image

Overview

Quantity:	100 µL
Target:	TBC1D20
Binding Specificity:	C-Term
Reactivity:	Human, Mouse, Pig, Dog, Guinea Pig, Horse, Cow, Rabbit, Rat
Host:	Rabbit
Clonality:	Polyclonal
Conjugate:	This TBC1D20 antibody is un-conjugated
Application:	Western Blotting (WB)

Product Details

Sequence:	ERTAASTFKD FELASAQGRP DMVLRQRFGRG LLRPEDRTKD VLTKPRTNRF
Predicted Reactivity:	Cow: 86%, Dog: 86%, Guinea Pig: 86%, Horse: 100%, Human: 100%, Mouse: 93%, Pig: 100%, Rabbit: 93%, Rat: 93%
Characteristics:	This is a rabbit polyclonal antibody against TBC1D20. It was validated on Western Blot.
Purification:	Affinity Purified

Target Details

Target:	TBC1D20
Alternative Name:	TBC1D20 (TBC1D20 Products)
Background:	TBC1D20 may act as a GTPase-activating protein for Rab family protein(s).

Target Details

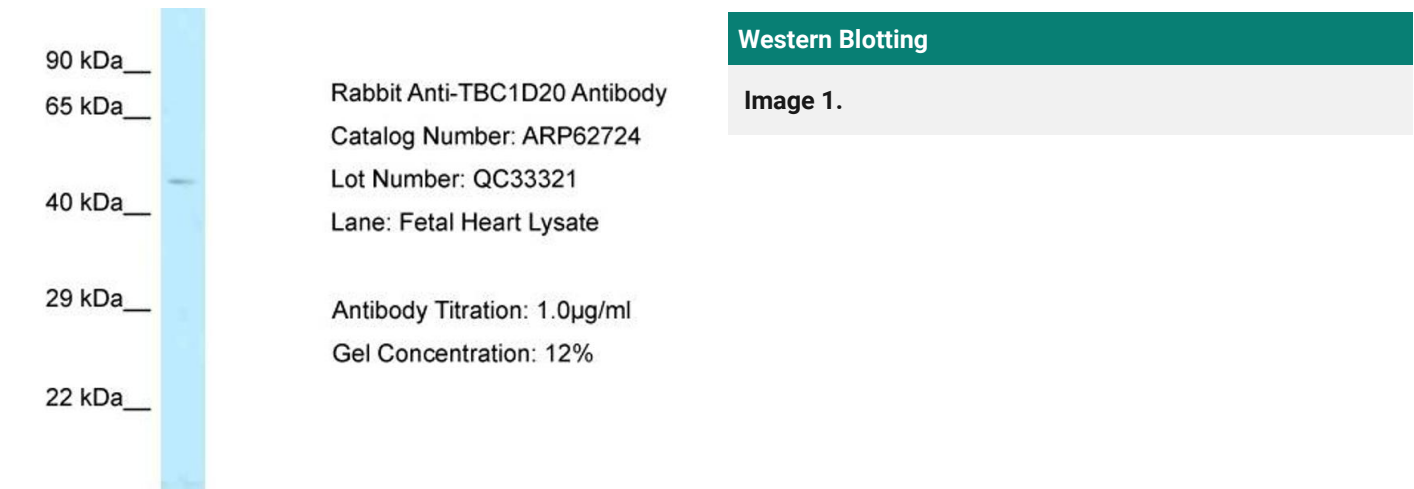
	Alias Symbols: C20orf140, FLJ45119 Protein Interaction Partner: APP, ELAVL1, UBC, Protein Size: 403
Molecular Weight:	44 kDa
Gene ID:	128637
NCBI Accession:	NM_144628 , NP_653229
UniProt:	Q96BZ9

Application Details

Application Notes:	Optimal working dilutions should be determined experimentally by the investigator.
Comment:	Antigen size: 403 AA
Restrictions:	For Research Use only

Handling

Format:	Liquid
Concentration:	Lot specific
Buffer:	Liquid. Purified antibody supplied in 1x PBS buffer with 0.09 % (w/v) sodium azide and 2 % sucrose.
Preservative:	Sodium azide
Precaution of Use:	This product contains Sodium azide: a POISONOUS AND HAZARDOUS SUBSTANCE which should be handled by trained staff only.
Handling Advice:	Avoid repeated freeze-thaw cycles.
Storage:	-20 °C
Storage Comment:	For short term use, store at 2-8°C up to 1 week. For long term storage, store at -20°C in small aliquots to prevent freeze-thaw cycles.



Western Blotting

Image 1.