

Datasheet for ABIN2789227  
**anti-MPP6 antibody (C-Term)**



[Go to Product page](#)

1 Image

## Overview

Quantity:	100 µL
Target:	MPP6
Binding Specificity:	C-Term
Reactivity:	Human, Mouse, Rat, Cow, Dog, Guinea Pig, Horse, Rabbit, Zebrafish (Danio rerio)
Host:	Rabbit
Clonality:	Polyclonal
Conjugate:	This MPP6 antibody is un-conjugated
Application:	Western Blotting (WB)

## Product Details

Immunogen:	The immunogen is a synthetic peptide directed towards the C-terminal region of Mouse Mpp6
Sequence:	TTVPFTRSRKP REDEKDGQAY KFSRSEMEA DIKAGKYLEH GEYEGNLYGT
Predicted Reactivity:	Cow: 100%, Dog: 100%, Guinea Pig: 100%, Horse: 100%, Human: 100%, Mouse: 100%, Rabbit: 100%, Rat: 100%, Zebrafish: 79%
Characteristics:	This is a rabbit polyclonal antibody against Mpp6. It was validated on Western Blot.
Purification:	Affinity Purified

## Target Details

Target:	MPP6
Alternative Name:	Mpp6 ( <a href="#">MPP6 Products</a> )

## Target Details

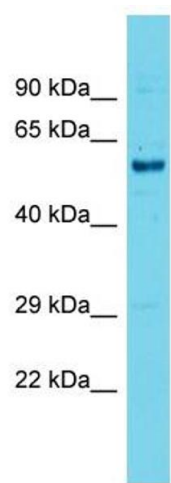
Background:	The function of this protein remains unknown. Protein Interaction Partner: Lin7c, Protein Size: 553
Molecular Weight:	60 kDa
Gene ID:	56524
UniProt:	<a href="#">Q9JLB0</a>
Pathways:	<a href="#">Nucleotide Phosphorylation</a>

## Application Details

Restrictions:	For Research Use only
---------------	-----------------------

## Handling

Format:	Liquid
Concentration:	1 mg/mL
Buffer:	Liquid. Purified antibody supplied in 1x PBS buffer with 0.09 % (w/v) sodium azide and 2 % sucrose.
Preservative:	Sodium azide
Precaution of Use:	This product contains Sodium azide: a POISONOUS AND HAZARDOUS SUBSTANCE which should be handled by trained staff only.
Handling Advice:	Avoid repeat freeze-thaw cycles.
Storage:	-20 °C
Storage Comment:	For short term use, store at 2-8°C up to 1 week. For long term storage, store at -20°C in small aliquots to prevent freeze-thaw cycles.



**Western Blotting**

**Image 1.**