

Datasheet for ABIN2789228
anti-WBSCR22 antibody (C-Term)



[Go to Product page](#)

1 Image

Overview

Quantity:	100 µL
Target:	WBSCR22
Binding Specificity:	C-Term
Reactivity:	Human, Rat, Mouse, Dog, Cow, Guinea Pig, Horse, Pig, Rabbit
Host:	Rabbit
Clonality:	Polyclonal
Conjugate:	This WBSCR22 antibody is un-conjugated
Application:	Western Blotting (WB)

Product Details

Sequence:	GGAFERRGIR GHQTRRFPLR MSRRGMVRKS RAWVLEKKER HRRQGREVRP
Predicted Reactivity:	Cow: 77%, Dog: 86%, Guinea Pig: 79%, Horse: 86%, Human: 100%, Mouse: 86%, Pig: 86%, Rabbit: 93%, Rat: 86%
Characteristics:	This is a rabbit polyclonal antibody against WBSCR22. It was validated on Western Blot.
Purification:	Affinity Purified

Target Details

Target:	WBSCR22
Alternative Name:	WBSCR22 (WBSCR22 Products)
Background:	This gene encodes a protein containing a nuclear localization signal and an S-adenosyl-L-

Target Details

methionine binding motif typical of methyltransferases, suggesting that the encoded protein may act on DNA methylation. This gene is deleted in Williams syndrome, a multisystem developmental disorder caused by the deletion of contiguous genes at 7q11.23. Alternatively spliced transcript variants have been found.

Alias Symbols: HASJ4442, HUSSY-3, MGC19709, MGC2022, MGC5140, PP3381, WBMT

Protein Interaction Partner: VCP, UBC, PKN1, OAS1, ZMYM3, THOC2, WDR74, REM1, PHLPP1, PPIP5K1, CUL3, SUMO2,

Protein Size: 298

Molecular Weight: 32 kDa

Gene ID: 114049

NCBI Accession: [NM_001202560](#), [NP_001189489](#)

UniProt: [C9K060](#)

Application Details

Application Notes: Optimal working dilutions should be determined experimentally by the investigator.

Comment: Antigen size: 298 AA

Restrictions: For Research Use only

Handling

Format: Liquid

Concentration: Lot specific

Buffer: Liquid. Purified antibody supplied in 1x PBS buffer with 0.09 % (w/v) sodium azide and 2 % sucrose.

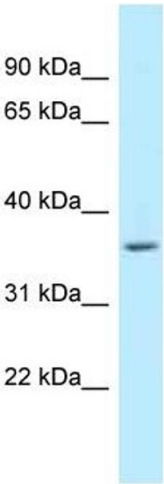
Preservative: Sodium azide

Precaution of Use: This product contains Sodium azide: a POISONOUS AND HAZARDOUS SUBSTANCE which should be handled by trained staff only.

Handling Advice: Avoid repeated freeze-thaw cycles.

Storage: -20 °C

Storage Comment: For short term use, store at 2-8°C up to 1 week. For long term storage, store at -20°C in small aliquots to prevent freeze-thaw cycles.



Western Blotting

Image 1. WB Suggested Anti-WBSCR22 Antibody Titration:
1.0 ug/ml Positive Control: Fetal Liver