



[Go to Product page](#)

Datasheet for ABIN2789241

## anti-LDAH/C2orf43 antibody (C-Term)

### 2 Images

#### Overview

Quantity:	100 µL
Target:	LDAH/C2orf43 (LDAH)
Binding Specificity:	C-Term
Reactivity:	Human, Mouse, Rat, Dog, Guinea Pig, Rabbit, Cow, Horse, Pig
Host:	Rabbit
Clonality:	Polyclonal
Conjugate:	This LDAH/C2orf43 antibody is un-conjugated
Application:	Western Blotting (WB), Immunohistochemistry (IHC)

#### Product Details

Sequence:	TIKEHLCKLT FYYGTIDPWC PKEYYEDIKK DFPEGDIRLC EKNIPHAFIT
Predicted Reactivity:	Cow: 86%, Dog: 100%, Guinea Pig: 79%, Horse: 93%, Human: 100%, Mouse: 91%, Pig: 86%, Rabbit: 100%, Rat: 89%
Characteristics:	This is a rabbit polyclonal antibody against C2orf43. It was validated on Western Blot.
Purification:	Affinity Purified

#### Target Details

Target:	LDAH/C2orf43 (LDAH)
Alternative Name:	C2orf43 ( <a href="#">LDAH Products</a> )
Background:	The function of this protein remains unknown.

## Target Details

---

Alias Symbols: FLJ21820  
Protein Interaction Partner: UBC,  
Protein Size: 325

---

Molecular Weight: 36 kDa

---

Gene ID: 60526

---

NCBI Accession: [NM\\_021925](#), [NP\\_068744](#)

---

UniProt: [Q9H6V9](#)

## Application Details

---

Application Notes: Optimal working dilutions should be determined experimentally by the investigator.

---

Comment: Antigen size: 325 AA

---

Restrictions: For Research Use only

## Handling

---

Format: Liquid

---

Concentration: Lot specific

---

Buffer: Liquid. Purified antibody supplied in 1x PBS buffer with 0.09 % (w/v) sodium azide and 2 % sucrose.

---

Preservative: Sodium azide

---

Precaution of Use: This product contains Sodium azide: a POISONOUS AND HAZARDOUS SUBSTANCE which should be handled by trained staff only.

---

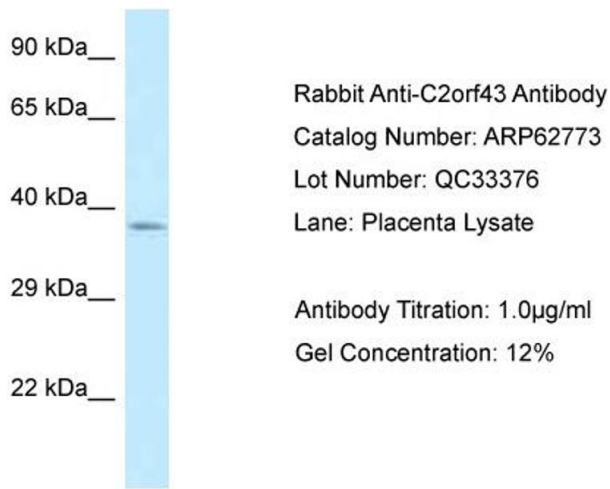
Handling Advice: Avoid repeated freeze-thaw cycles.

---

Storage: -20 °C

---

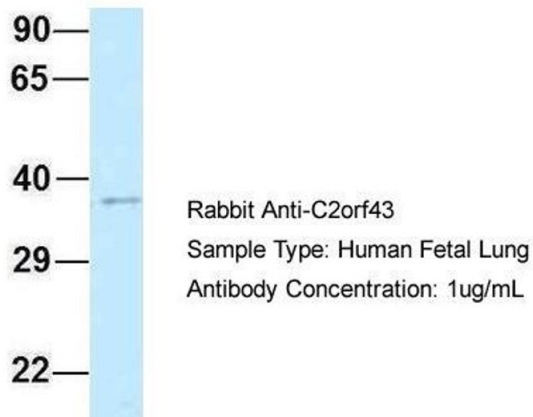
Storage Comment: For short term use, store at 2-8°C up to 1 week. For long term storage, store at -20°C in small aliquots to prevent freeze-thaw cycles.



### Western Blotting

**Image 1.**

## C2orf43



### Western Blotting

**Image 2.** Host: Rabbit

Target Name: C2orf43

Sample Tissue: Human Fetal Lung

Antibody Dilution: 1.0 µg/mL