



[Go to Product page](#)

Datasheet for ABIN2789242
anti-CCDC102B antibody (N-Term)

1 Image

Overview

Quantity:	100 µL
Target:	CCDC102B
Binding Specificity:	N-Term
Reactivity:	Human, Mouse, Rat, Cow, Dog, Horse, Rabbit, Guinea Pig, Zebrafish (Danio rerio)
Host:	Rabbit
Clonality:	Polyclonal
Conjugate:	This CCDC102B antibody is un-conjugated
Application:	Western Blotting (WB)

Product Details

Sequence:	TANWREKWSK VRAERNSARE EGRQLRIKLE MAMKELSTLK KKQSLPPQKE
Predicted Reactivity:	Cow: 100%, Dog: 100%, Guinea Pig: 86%, Horse: 100%, Human: 100%, Mouse: 86%, Rabbit: 100%, Rat: 86%, Zebrafish: 79%
Characteristics:	This is a rabbit polyclonal antibody against CCDC102B. It was validated on Western Blot.
Purification:	Affinity Purified

Target Details

Target:	CCDC102B
Alternative Name:	CCDC102B (CCDC102B Products)
Background:	The function of this protein remains unknown.

Target Details

Alias Symbols: ACY1L, AN, C18orf14, DKFZp434K1426, DKFZp686I08254, FLJ23594, HsT1731, MGC161726, MGC161728

Protein Interaction Partner: SYCE1, CCDC120, FBF1, CEP19, LNX1, FAM161A, ENKD1, SLIRP, CCDC33, CCDC102B, LENG1, C20orf195, NIF3L1, ZNF250, TRIM54, GOPC, NXT2, RCOR3, MAGOHB, WDYHV1, CCHCR1, POP5, SPG21, RSPH14, FAM127B, EXOC5, MAB21L2, HMG20B, ABI2, ARL4A, LMO4, ZNF20, TPM3, SDCBP, T

Protein Size: 297

Molecular Weight: 33 kDa

Gene ID: 79839

NCBI Accession: [NM_024781](#), [NP_079057](#)

UniProt: [A1A4H1](#)

Application Details

Application Notes: Optimal working dilutions should be determined experimentally by the investigator.

Comment: Antigen size: 297 AA

Restrictions: For Research Use only

Handling

Format: Liquid

Concentration: Lot specific

Buffer: Liquid. Purified antibody supplied in 1x PBS buffer with 0.09 % (w/v) sodium azide and 2 % sucrose.

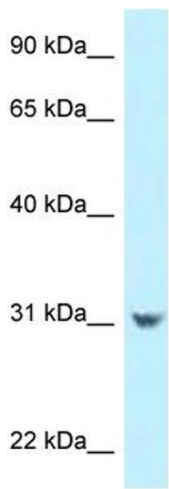
Preservative: Sodium azide

Precaution of Use: This product contains Sodium azide: a POISONOUS AND HAZARDOUS SUBSTANCE which should be handled by trained staff only.

Handling Advice: Avoid repeated freeze-thaw cycles.

Storage: -20 °C

Storage Comment: For short term use, store at 2-8°C up to 1 week. For long term storage, store at -20°C in small aliquots to prevent freeze-thaw cycles.



Rabbit Anti-CCDC102B Antibody
Catalog Number: ARP62777
Lot Number: QC33379
Lane: HepG2 Cell Lysate

Antibody Titration: 1.0µg/ml
Gel Concentration: 12%

Western Blotting

Image 1.