

Datasheet for ABIN2789265
anti-GTPBP5 antibody (N-Term)



[Go to Product page](#)

1 Image

Overview

Quantity:	100 µL
Target:	GTPBP5
Binding Specificity:	N-Term
Reactivity:	Human, Mouse, Rat, Cow, Guinea Pig, Horse, Rabbit, Zebrafish (Danio rerio)
Host:	Rabbit
Clonality:	Polyclonal
Conjugate:	This GTPBP5 antibody is un-conjugated
Application:	Western Blotting (WB)

Product Details

Immunogen:	The immunogen is a synthetic peptide directed towards the N-terminal region of GTPBP5
Sequence:	SRYQGFSGED GGSKNCFGRS GAVLYIRVPV GTLVKEGGRV VADLSCVGDE
Predicted Reactivity:	Cow: 86%, Guinea Pig: 100%, Horse: 86%, Human: 100%, Mouse: 100%, Rabbit: 92%, Rat: 100%, Zebrafish: 91%
Characteristics:	This is a rabbit polyclonal antibody against GTPBP5. It was validated on Western Blot.
Purification:	Affinity Purified

Target Details

Target:	GTPBP5
Alternative Name:	GTPBP5 (GTPBP5 Products)

Target Details

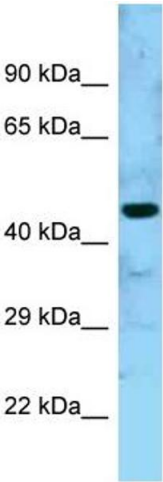
Background:	Small G proteins, such as GTPBP5, act as molecular switches that play crucial roles in the regulation of fundamental cellular processes such as protein synthesis, nuclear transport, membrane trafficking, and signal transduction . Alias Symbols: FLJ10741, MGC29512, ObgH1, dJ1005F21.2, GTPBP5 Protein Interaction Partner: UBC, TAB1, MAPK6, Protein Size: 406
Molecular Weight:	45 kDa
Gene ID:	26164
NCBI Accession:	NM_015666 , NP_056481
UniProt:	Q9H4K7

Application Details

Application Notes:	Optimal working dilutions should be determined experimentally by the investigator.
Comment:	Antigen size: 406 AA
Restrictions:	For Research Use only

Handling

Format:	Liquid
Concentration:	Lot specific
Buffer:	Liquid. Purified antibody supplied in 1x PBS buffer with 0.09 % (w/v) sodium azide and 2 % sucrose.
Preservative:	Sodium azide
Precaution of Use:	This product contains Sodium azide: a POISONOUS AND HAZARDOUS SUBSTANCE which should be handled by trained staff only.
Handling Advice:	Avoid repeated freeze-thaw cycles.
Storage:	-20 °C
Storage Comment:	For short term use, store at 2-8°C up to 1 week. For long term storage, store at -20°C in small aliquots to prevent freeze-thaw cycles.



Western Blotting

Image 1. WB Suggested Anti-GTPBP5 Antibody Titration:
1.0 ug/ml Positive Control: Fetal Kidney