

Datasheet for ABIN2789285
anti-PLA2G4B antibody (C-Term)



[Go to Product page](#)

1 Image

Overview

Quantity:	100 µL
Target:	PLA2G4B
Binding Specificity:	C-Term
Reactivity:	Human, Dog, Horse, Rabbit
Host:	Rabbit
Clonality:	Polyclonal
Conjugate:	This PLA2G4B antibody is un-conjugated
Application:	Western Blotting (WB)

Product Details

Immunogen:	The immunogen is a synthetic peptide directed towards the C-terminal region of Human PLA2G4B
Sequence:	LQLLGRCQE QGIPFPISP SPEEQLQPRE CHTFSDPTCP GAPAVLHFPL
Predicted Reactivity:	Dog: 79%, Horse: 100%, Human: 100%, Rabbit: 79%
Characteristics:	This is a rabbit polyclonal antibody against PLA2G4B. It was validated on Western Blot.
Purification:	Affinity Purified

Target Details

Target:	PLA2G4B
Alternative Name:	PLA2G4B (PLA2G4B Products)

Target Details

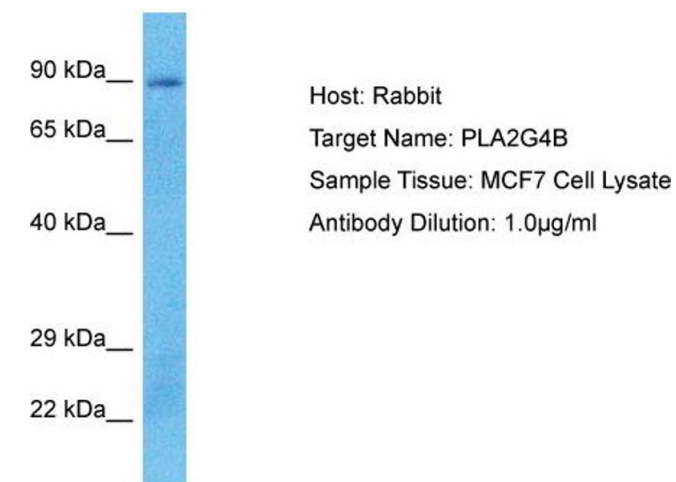
Background:	<p>This gene encodes a member of the cytosolic phospholipase A2 protein family. Phospholipase A2 enzymes hydrolyze the sn-2 bond of phospholipids, releasing lysophospholipids and fatty acids. This enzyme may be associated with mitochondria and early endosomes. Most tissues also express read-through transcripts from the upstream gene into this gene, some of which may encode fusion proteins combining the N-terminus of the upstream gene including its JmjC domain with the almost complete coding region of this gene, including the C2 and cytoplasmic phospholipase A2 domains.</p> <p>Protein Interaction Partner: CASP8, CASP7, CASP3, CASP1,</p> <p>Protein Size: 781</p>
Molecular Weight:	85 kDa
Gene ID:	100137049
UniProt:	P0C869
Pathways:	ER-Nucleus Signaling , VEGF Signaling

Application Details

Application Notes:	Optimal working dilution should be determined by the investigator.
Restrictions:	For Research Use only

Handling

Format:	Liquid
Concentration:	1 mg/mL
Buffer:	Liquid. Purified antibody supplied in 1x PBS buffer with 0.09 % (w/v) sodium azide and 2 % sucrose.
Preservative:	Sodium azide
Precaution of Use:	This product contains Sodium azide: a POISONOUS AND HAZARDOUS SUBSTANCE which should be handled by trained staff only.
Handling Advice:	Avoid repeat freeze-thaw cycles.
Storage:	-20 °C
Storage Comment:	For short term use, store at 2-8°C up to 1 week. For long term storage, store at -20°C in small aliquots to prevent freeze-thaw cycles.



Western Blotting

Image 1. Host: Rabbit Target Name: PLA2G4B Sample Type: MCF7 Whole Cell lysates Antibody Dilution: 1.0ug/ml