

Datasheet for ABIN2789286
anti-PLCXD1 antibody (C-Term)



[Go to Product page](#)

1 Image

Overview

Quantity:	100 µL
Target:	PLCXD1
Binding Specificity:	C-Term
Reactivity:	Human, Cow, Dog, Horse, Rabbit, Rat
Host:	Rabbit
Clonality:	Polyclonal
Conjugate:	This PLCXD1 antibody is un-conjugated
Application:	Western Blotting (WB)

Product Details

Immunogen:	The immunogen is a synthetic peptide directed towards the C-terminal region of PLCXD1
Sequence:	YWWGNRVKTE ALIRYLETMK SCGRPGGLFV AGINLTENLQ YVLAHPSESL
Predicted Reactivity:	Cow: 86%, Dog: 93%, Horse: 93%, Human: 100%, Rabbit: 93%, Rat: 90%
Characteristics:	This is a rabbit polyclonal antibody against PLCXD1. It was validated on Western Blot.
Purification:	Affinity Purified

Target Details

Target:	PLCXD1
Alternative Name:	PLCXD1 (PLCXD1 Products)
Background:	This gene is the most terminal protein-coding gene in the pseudoautosomal (PAR) region on

Target Details

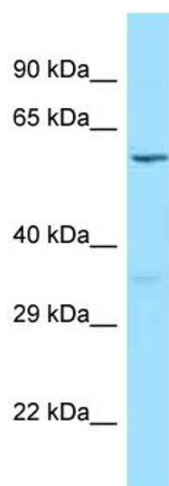
	chromosomes X and Y. Alternate splicing results in multiple transcript variants. Alias Symbols: FLJ11323 Protein Interaction Partner: UBC, ELAVL1, Protein Size: 323
Molecular Weight:	36 kDa
Gene ID:	55344
NCBI Accession:	NM_018390 , NP_060860
UniProt:	Q9NUJ7

Application Details

Application Notes:	Optimal working dilutions should be determined experimentally by the investigator.
Comment:	Antigen size: 323 AA
Restrictions:	For Research Use only

Handling

Format:	Liquid
Concentration:	Lot specific
Buffer:	Liquid. Purified antibody supplied in 1x PBS buffer with 0.09 % (w/v) sodium azide and 2 % sucrose.
Preservative:	Sodium azide
Precaution of Use:	This product contains Sodium azide: a POISONOUS AND HAZARDOUS SUBSTANCE which should be handled by trained staff only.
Handling Advice:	Avoid repeated freeze-thaw cycles.
Storage:	-20 °C
Storage Comment:	For short term use, store at 2-8°C up to 1 week. For long term storage, store at -20°C in small aliquots to prevent freeze-thaw cycles.



Western Blotting

Image 1. WB Suggested Anti-PLCXD1 Antibody Titration:
1.0 ug/ml Positive Control: 721_B Whole Cell PLCXD1 is supported by BioGPS gene expression data to be expressed in 721_B