

Datasheet for ABIN2789287
anti-PPP1R3C antibody (N-Term)

3 Images

[Go to Product page](#)

Overview

Quantity:	100 µL
Target:	PPP1R3C
Binding Specificity:	N-Term
Reactivity:	Human, Dog, Horse, Pig, Rabbit
Host:	Rabbit
Clonality:	Polyclonal
Application:	Western Blotting (WB)

Product Details

Sequence:	PPVKSFLGPY DEFQRRHFVN KLKPLKSCLN IKHKAKSQND WKCSHNQAKK
Predicted Reactivity:	Dog: 79%, Horse: 79%, Human: 100%, Pig: 79%, Rabbit: 79%
Characteristics:	This is a rabbit polyclonal antibody against PPP1R3C. It was validated on Western Blot.
Purification:	Affinity Purified

Target Details

Target:	PPP1R3C
Alternative Name:	PPP1R3C (PPP1R3C Products)
Background:	Protein phosphatase-1 participates in the regulation of a wide variety of cellular functions by reversible protein phosphorylation. The ability of PP1 to regulate diverse functions resides in its capacity to interact with a variety of regulatory subunits that may target PP1 to specific subcellular locations, modulate its substrate specificity, and allow its activity to be responsive

Target Details

to extracellular signals. Several targeting subunits of PP1 have been identified, including PPP1R5, the glycogen-binding subunits PPP1R3 and PPP1R4, and the nuclear inhibitor of PP1.

Alias Symbols: PPP1R5

Protein Interaction Partner: PPP1CB, UBC, PPP1CC, APP, ELAVL1, PPP1CA, SGTA, NHLRC1, EPM2A,

Protein Size: 317

Molecular Weight:	35 kDa
Gene ID:	5507
NCBI Accession:	NM_005398 , NP_005389
UniProt:	Q9UQK1
Pathways:	Cellular Glucan Metabolic Process , Regulation of Carbohydrate Metabolic Process

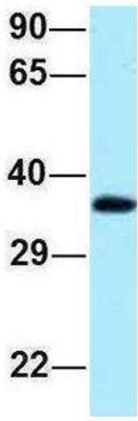
Application Details

Application Notes:	Optimal working dilutions should be determined experimentally by the investigator.
Comment:	Antigen size: 317 AA
Restrictions:	For Research Use only

Handling

Format:	Liquid
Concentration:	Lot specific
Buffer:	Liquid. Purified antibody supplied in 1x PBS buffer with 0.09 % (w/v) sodium azide and 2 % sucrose.
Preservative:	Sodium azide
Precaution of Use:	This product contains Sodium azide: a POISONOUS AND HAZARDOUS SUBSTANCE which should be handled by trained staff only.
Handling Advice:	Avoid repeated freeze-thaw cycles.
Storage:	-20 °C
Storage Comment:	For short term use, store at 2-8°C up to 1 week. For long term storage, store at -20°C in small aliquots to prevent freeze-thaw cycles.

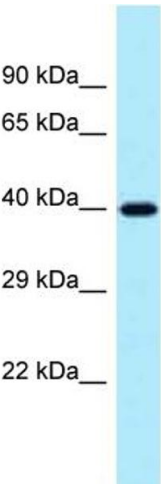
PPP1R3C



Rabbit Anti-PPP1R3C
Sample Type: Human Fetal Lung
Antibody Concentration: 1ug/mL

Western Blotting

Image 1. Host: Rabbit
Target Name: PPP1R3C
Sample Tissue: Human Fetal Lung
Antibody Dilution: 1.0 µg/mL



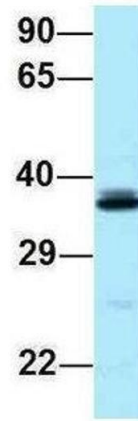
Rabbit Anti-PPP1R3C Antibody
Catalog Number: ARP62902
Lot Number: QC33474
Lane: 293T Cell Lysate

Antibody Titration: 1.0µg/ml
Gel Concentration: 12%

Western Blotting

Image 2.

PPP1R3C



Rabbit Anti-PPP1R3C
Sample Type: Human Adult Placenta
Antibody Concentration: 1ug/mL

Western Blotting

Image 3. Host: Rabbit
Target Name: PPP1R3C
Sample Tissue: Human Adult Placenta
Antibody Dilution: 1.0 µg/mL