

Datasheet for ABIN2789290  
**anti-SLC50A1 antibody (C-Term)**[Go to Product page](#)

## 1 Image

## Overview

Quantity:	100 µL
Target:	SLC50A1 (RAG1AP1)
Binding Specificity:	C-Term
Reactivity:	Human, Cow, Rabbit, Dog, Guinea Pig, Horse, Mouse, Pig, Rat
Host:	Rabbit
Clonality:	Polyclonal
Conjugate:	This SLC50A1 antibody is un-conjugated
Application:	Western Blotting (WB)

## Product Details

Sequence:	SMYLSPLADL AKVIQTKSTQ CLSYPLTIAT LLTSASWCLY GFRLRDPYIM
Predicted Reactivity:	Cow: 86%, Dog: 79%, Guinea Pig: 86%, Horse: 91%, Human: 100%, Mouse: 79%, Pig: 93%, Rabbit: 86%, Rat: 86%
Characteristics:	This is a rabbit polyclonal antibody against SLC50A1. It was validated on Western Blot.
Purification:	Affinity Purified

## Target Details

Target:	SLC50A1 (RAG1AP1)
Alternative Name:	SLC50A1 ( <a href="#">RAG1AP1 Products</a> )
Background:	SLC50A1 mediates sugar transport across membranes. It may stimulate V(D)J recombination

## Target Details

by the activation of RAG1.

Alias Symbols: SCP, slv, SWEET1, RAG1AP1, HsSWEET1, RP11-540D14.5

Protein Interaction Partner: ELAVL1, TRPV2,

Protein Size: 221

Molecular Weight: 24 kDa

Gene ID: 55974

NCBI Accession: [NM\\_018845](#), [NP\\_061333](#)

UniProt: [Q9BRV3](#)

## Application Details

Application Notes: Optimal working dilutions should be determined experimentally by the investigator.

Comment: Antigen size: 221 AA

Restrictions: For Research Use only

## Handling

Format: Liquid

Concentration: Lot specific

Buffer: Liquid. Purified antibody supplied in 1x PBS buffer with 0.09 % (w/v) sodium azide and 2 % sucrose.

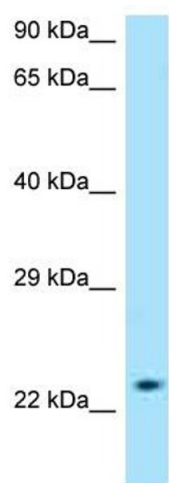
Preservative: Sodium azide

Precaution of Use: This product contains Sodium azide: a POISONOUS AND HAZARDOUS SUBSTANCE which should be handled by trained staff only.

Handling Advice: Avoid repeated freeze-thaw cycles.

Storage: -20 °C

Storage Comment: For short term use, store at 2-8°C up to 1 week. For long term storage, store at -20°C in small aliquots to prevent freeze-thaw cycles.



Western Blotting

**Image 1.** WB Suggested Anti-SLC50A1 Antibody Titration:  
1.0 µg/mL  
Positive Control: MCF7 Whole Cell  
SLC50A1 is supported by BioGPS gene expression data to be expressed in MCF7