

Datasheet for ABIN2789298
anti-TARS2 antibody (C-Term)[Go to Product page](#)

1 Image

Overview

Quantity:	100 µL
Target:	TARS2
Binding Specificity:	C-Term
Reactivity:	Human, Rat, Cow, Dog, Pig, Saccharomyces cerevisiae
Host:	Rabbit
Clonality:	Polyclonal
Conjugate:	This TARS2 antibody is un-conjugated
Application:	Western Blotting (WB)

Product Details

Immunogen:	The immunogen is a synthetic peptide directed towards the C-terminal region of human TARS2
Sequence:	VVVIPVGSEQ EEYAKEAQQS LRAAGLVSDL DADSGLTLSR RIRRAQLAHY
Predicted Reactivity:	Cow: 86%, Dog: 85%, Human: 100%, Pig: 93%, Rat: 79%, Yeast: 100%
Characteristics:	This is a rabbit polyclonal antibody against TARS2. It was validated on Western Blot.
Purification:	Affinity Purified

Target Details

Target:	TARS2
Alternative Name:	TARS2 (TARS2 Products)
Background:	This gene encodes a member of the class-II aminoacyl-tRNA synthetase family. The encoded

Target Details

protein is a mitochondrial aminoacyl-tRNA synthetase. Alternative splicing results in multiple transcript variants. A related pseudogene has been identified on chromosome 4.

Alias Symbols: thrRS, TARSL1, COXPD21

Protein Size: 443

Molecular Weight: 48 kDa

Gene ID: 80222

NCBI Accession: [NM_001271896](#), [NP_001258825](#)

UniProt: [Q9BW92](#)

Pathways: [SARS-CoV-2 Protein Interactome](#)

Application Details

Application Notes: Optimal working dilution should be determined by the investigator.

Restrictions: For Research Use only

Handling

Format: Liquid

Concentration: 1 mg/mL

Buffer: Liquid. Purified antibody supplied in 1x PBS buffer with 0.09 % (w/v) sodium azide and 2 % sucrose.

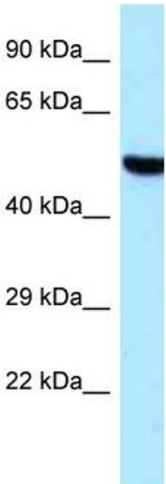
Preservative: Sodium azide

Precaution of Use: This product contains Sodium azide: a POISONOUS AND HAZARDOUS SUBSTANCE which should be handled by trained staff only.

Handling Advice: Avoid repeat freeze-thaw cycles.

Storage: -20 °C

Storage Comment: For short term use, store at 2-8°C up to 1 week. For long term storage, store at -20°C in small aliquots to prevent freeze-thaw cycles.



Western Blotting

Image 1.