



[Go to Product page](#)

Datasheet for ABIN2789304

anti-TWIST Neighbor antibody (C-Term)

1 Image

Overview

Quantity:	100 µL
Target:	TWIST Neighbor (TWISTNB)
Binding Specificity:	C-Term
Reactivity:	Human, Horse, Rabbit
Host:	Rabbit
Clonality:	Polyclonal
Conjugate:	This TWIST Neighbor antibody is un-conjugated
Application:	Western Blotting (WB)

Product Details

Sequence:	ELEFEVFRDL SDAAGVFCIR GKLNITSLQF KRSEVSEEV T ENGTEEA AKK
Predicted Reactivity:	Horse: 83%, Human: 100%, Rabbit: 92%
Characteristics:	This is a rabbit polyclonal antibody against TWISTNB. It was validated on Western Blot.
Purification:	Affinity Purified

Target Details

Target:	TWIST Neighbor (TWISTNB)
Alternative Name:	TWISTNB (TWISTNB Products)
Background:	DNA-dependent RNA polymerase catalyzes the transcription of DNA into RNA using the four ribonucleoside triphosphates as substrates. TWISTNB is a component of RNA polymerase I

Target Details

which synthesizes ribosomal RNA precursors. Through its association with RRN3/TIF-IA may be involved in recruitment of Pol I to rDNA promoters.

Alias Symbols: -

Protein Interaction Partner: MPG, PPP1CC, ARRB2, ELAVL1, TAF1D,

Protein Size: 338

Molecular Weight: 37 kDa

Gene ID: 221830

NCBI Accession: [NM_001002926](#), [NP_001002926](#)

UniProt: [Q3B726](#)

Application Details

Application Notes: Optimal working dilutions should be determined experimentally by the investigator.

Comment: Antigen size: 338 AA

Restrictions: For Research Use only

Handling

Format: Liquid

Concentration: Lot specific

Buffer: Liquid. Purified antibody supplied in 1x PBS buffer with 0.09 % (w/v) sodium azide and 2 % sucrose.

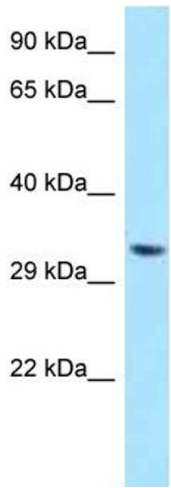
Preservative: Sodium azide

Precaution of Use: This product contains Sodium azide: a POISONOUS AND HAZARDOUS SUBSTANCE which should be handled by trained staff only.

Handling Advice: Avoid repeated freeze-thaw cycles.

Storage: -20 °C

Storage Comment: For short term use, store at 2-8°C up to 1 week. For long term storage, store at -20°C in small aliquots to prevent freeze-thaw cycles.



Rabbit Anti-TWISTNB Antibody
Catalog Number: ARP62936
Lot Number: QC33499
Lane: HepG2 Cell Lysate

Antibody Titration: 1.0µg/ml
Gel Concentration: 12%

Western Blotting

Image 1.