



[Go to Product page](#)

Datasheet for ABIN2789352

## anti-PPP2CA antibody (N-Term)

### 3 Images

#### Overview

Quantity:	100 µL
Target:	PPP2CA
Binding Specificity:	N-Term
Reactivity:	Human, Mouse, Rat, Cow, Rabbit, Zebrafish (Danio rerio), Dog, Guinea Pig, Horse
Host:	Rabbit
Clonality:	Polyclonal
Conjugate:	This PPP2CA antibody is un-conjugated
Application:	Western Blotting (WB)

#### Product Details

Sequence:	LSSEQVKSLC EKAKEILTKE SNVQEVRCPV TVCGDVHGQF HDLMELFRIG
Predicted Reactivity:	Cow: 100%, Dog: 100%, Guinea Pig: 100%, Horse: 100%, Human: 100%, Mouse: 100%, Rabbit: 100%, Rat: 100%, Zebrafish: 100%
Characteristics:	This is a rabbit polyclonal antibody against PPP2CA. It was validated on Western Blot.
Purification:	Affinity Purified

#### Target Details

Target:	PPP2CA
Alternative Name:	PPP2CA ( <a href="#">PPP2CA Products</a> )
Background:	This gene encodes the phosphatase 2A catalytic subunit. Protein phosphatase 2A is one of the

## Target Details

---

four major Ser/Thr phosphatases, and it is implicated in the negative control of cell growth and division. It consists of a common heteromeric core enzyme, which is composed of a catalytic subunit and a constant regulatory subunit, that associates with a variety of regulatory subunits.

This gene encodes an alpha isoform of the catalytic subunit.

Alias Symbols: PP2Ac, PP2CA, PP2Calpha, RP-C

Protein Interaction Partner: ZFP36, UBC, MID1, VAC14, SETBP1, PPP2R1A, SUMO2, ESPL1, HTT, VCP, ZNF346, NEDD8, SUMO1, RPA3, RPA2, RPA1, HNRNPH1, NIF3L1, TNPO3, AHCYL1, ARPC4, SSB, PFDN1, NRD1, TNPO1, IGBP1, XRN1, TRIP13, BAG3, STK26, CHEK2, STK25, POLA1, NPM1, STK24, CTDP1, RAF1, ID1,

Protein Size: 309

---

Molecular Weight: 34 kDa

---

Gene ID: 5515

---

NCBI Accession: [NM\\_002715](#), [NP\\_002706](#)

---

UniProt: [P67775](#)

---

Pathways: [PI3K-Akt Signaling](#), [Mitotic G1-G1/S Phases](#), [Hepatitis C](#), [Toll-Like Receptors Cascades](#)

## Application Details

---

Application Notes: Optimal working dilutions should be determined experimentally by the investigator.

---

Comment: Antigen size: 309 AA

---

Restrictions: For Research Use only

## Handling

---

Format: Liquid

---

Concentration: Lot specific

---

Buffer: Liquid. Purified antibody supplied in 1x PBS buffer with 0.09 % (w/v) sodium azide and 2 % sucrose.

---

Preservative: Sodium azide

---

Precaution of Use: This product contains Sodium azide: a POISONOUS AND HAZARDOUS SUBSTANCE which should be handled by trained staff only.

---

Handling Advice: Avoid repeated freeze-thaw cycles.

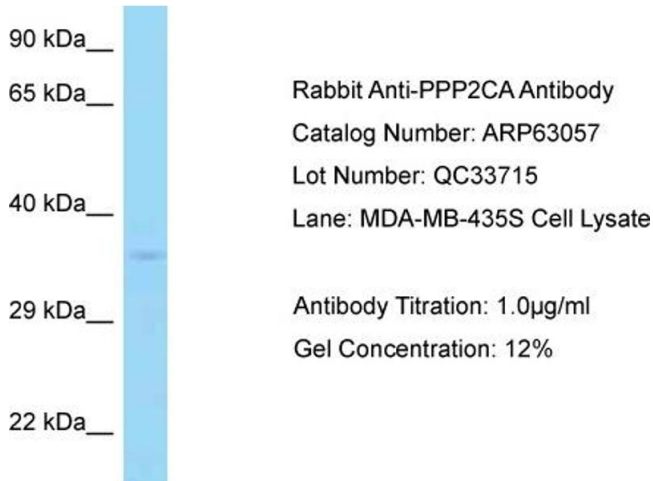
---

## Handling

Storage: -20 °C

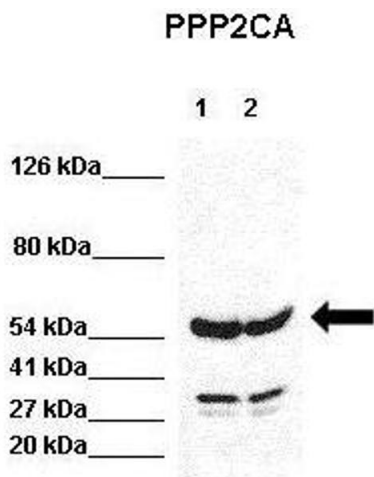
Storage Comment: For short term use, store at 2-8°C up to 1 week. For long term storage, store at -20°C in small aliquots to prevent freeze-thaw cycles.

## Images



### Western Blotting

**Image 1.**



### Western Blotting

**Image 2.** WB Suggested Anti-PPP2CA Antibody

Positive Control: Lane 1:441 µg HEK293 lysate Lane 2: 041 µg H1299 lysate

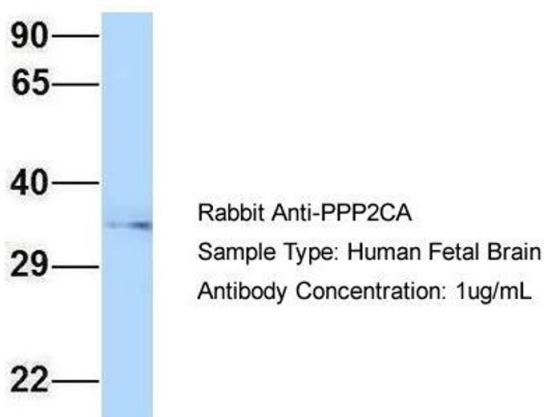
Primary Antibody Dilution: 1:0000

Secondary Antibody: Goat anti-rabbit-HRP Secondary

Antibody Dilution: 1:0000

Submitted by: Jose Luis Rosa, Universitat de Barcelona

## PPP2CA



### Western Blotting

**Image 3.** Host: Rabbit

Target Name: PPP2CA

Sample Tissue: Human Fetal Brain

Antibody Dilution: 1.0 µg/mL