

Datasheet for ABIN2789357
anti-TES antibody (Middle Region)



[Go to Product page](#)

1 Image

Overview

Quantity:	100 µL
Target:	TES
Binding Specificity:	Middle Region
Reactivity:	Human, Cow, Dog, Guinea Pig, Sheep, Horse, Pig
Host:	Rabbit
Clonality:	Polyclonal
Conjugate:	This TES antibody is un-conjugated
Application:	Western Blotting (WB), Immunohistochemistry (IHC)

Product Details

Sequence:	PKQMNIPGGD RSTPAAVGAM EDKSAEHKRT QYSCYCCKLS MKEGDPAIYA
Predicted Reactivity:	Cow: 100%, Dog: 100%, Guinea Pig: 91%, Horse: 79%, Human: 100%, Pig: 93%, Sheep: 100%
Characteristics:	This is a rabbit polyclonal antibody against TES. It was validated on Western Blot.
Purification:	Affinity Purified

Target Details

Target:	TES
Alternative Name:	TES (TES Products)
Background:	Cancer-associated chromosomal changes often involve regions containing fragile sites. This gene maps to a common fragile site on chromosome 7q31.2 designated FRA7G. This gene is

Target Details

similar to mouse Testin, a testosterone-responsive gene encoding a Sertoli cell secretory protein containing three LIM domains. LIM domains are double zinc-finger motifs that mediate protein-protein interactions between transcription factors, cytoskeletal proteins and signaling proteins. This protein is a negative regulator of cell growth and may act as a tumor suppressor. This scaffold protein may also play a role in cell adhesion, cell spreading and in the reorganization of the actin cytoskeleton. Multiple protein isoforms are encoded by transcript variants of this gene.

Alias Symbols: DKFZp586B2022, MGC1146, TESS, TESS-2

Protein Interaction Partner: SUMO2, VPS25, RPRD1B, OSGEP, NAGK, HNRNPUL1, EPRS, EVL, SOCS3, SPTAN1, THADA, AHCYL1, SSSCA1, ZPR1, IGBP1, ELAVL1, UBC, ARAP1, Cep350, ENAH, SPOCK2, ACTL7A, TES, ZYX, VASP, GRIPAP1, TLN1, ACTN1, RAB8B, ACTA1, GRIP1, Protein Size: 421

Molecular Weight: 47 kDa

Gene ID: 26136

NCBI Accession: [NM_015641](#), [NP_056456](#)

UniProt: [Q9UGI8](#)

Application Details

Application Notes: Optimal working dilutions should be determined experimentally by the investigator.

Comment: Antigen size: 421 AA

Restrictions: For Research Use only

Handling

Format: Liquid

Concentration: Lot specific

Buffer: Liquid. Purified antibody supplied in 1x PBS buffer with 0.09 % (w/v) sodium azide and 2 % sucrose.

Preservative: Sodium azide

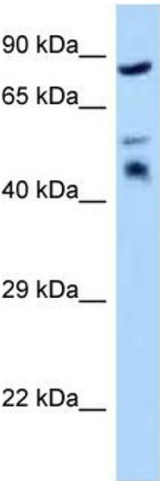
Precaution of Use: This product contains Sodium azide: a POISONOUS AND HAZARDOUS SUBSTANCE which should be handled by trained staff only.

Handling Advice: Avoid repeated freeze-thaw cycles.

Handling

Storage:	-20 °C
Storage Comment:	For short term use, store at 2-8°C up to 1 week. For long term storage, store at -20°C in small aliquots to prevent freeze-thaw cycles.

Images



Rabbit Anti-TES Antibody
Catalog Number: ARP63068
Lot Number: QC33724
Lane: Hela Cell Lysate

Antibody Titration: 1.0µg/ml
Gel Concentration: 12%

Western Blotting

Image 1.