

Datasheet for ABIN2789388
anti-AMDHD2 antibody (N-Term)[Go to Product page](#)

1 Image

Overview

Quantity:	100 µL
Target:	AMDHD2
Binding Specificity:	N-Term
Reactivity:	Human, Mouse, Rat, Horse, Pig, Rabbit, Cow, Dog, Guinea Pig
Host:	Rabbit
Clonality:	Polyclonal
Conjugate:	This AMDHD2 antibody is un-conjugated
Application:	Western Blotting (WB)

Product Details

Sequence:	LFEEERRVAD ERRDCGGRIL APGFIDVQIN GGFGVDFSQA TEDVGSGVAL
Predicted Reactivity:	Cow: 92%, Dog: 100%, Guinea Pig: 91%, Horse: 92%, Human: 100%, Mouse: 93%, Pig: 92%, Rabbit: 93%, Rat: 93%
Characteristics:	This is a rabbit polyclonal antibody against AMDHD2. It was validated on Western Blot.
Purification:	Affinity Purified

Target Details

Target:	AMDHD2
Alternative Name:	AMDHD2 (AMDHD2 Products)
Background:	The function of this protein remains unknown.

Target Details

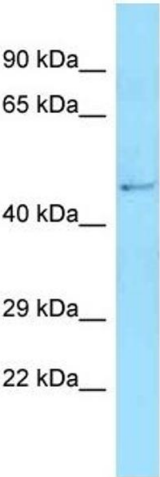
	Alias Symbols: CGI-14 Protein Interaction Partner: GNPDA2, TRIP13, UBC, Protein Size: 439
Molecular Weight:	47 kDa
Gene ID:	51005
NCBI Accession:	NM_015944 , NP_057028

Application Details

Application Notes:	Optimal working dilutions should be determined experimentally by the investigator.
Comment:	Antigen size: 439 AA
Restrictions:	For Research Use only

Handling

Format:	Liquid
Concentration:	Lot specific
Buffer:	Liquid. Purified antibody supplied in 1x PBS buffer with 0.09 % (w/v) sodium azide and 2 % sucrose.
Preservative:	Sodium azide
Precaution of Use:	This product contains Sodium azide: a POISONOUS AND HAZARDOUS SUBSTANCE which should be handled by trained staff only.
Handling Advice:	Avoid repeated freeze-thaw cycles.
Storage:	-20 °C
Storage Comment:	For short term use, store at 2-8°C up to 1 week. For long term storage, store at -20°C in small aliquots to prevent freeze-thaw cycles.



Rabbit Anti-AMDHD2 Antibody

Lot Number: QC34240

Lane: Fetal Kidney Lysate

Antibody Titration: 1.0µg/ml

Gel Concentration: 12%

Western Blotting

Image 1. Host: Rabbit Target Name: AMDHD2 Sample Type: Fetal Kidney Antibody Dilution: 1.0ug/ml