

Datasheet for ABIN2789402
anti-Merlin antibody (C-Term)[Go to Product page](#)

2 Images

1 Publication

Overview

Quantity:	100 µL
Target:	Merlin (NF2)
Binding Specificity:	C-Term
Reactivity:	Human, Mouse, Rat, Zebrafish (Danio rerio), Dog, Cow, Horse, Rabbit, Guinea Pig
Host:	Rabbit
Clonality:	Polyclonal
Conjugate:	This Merlin antibody is un-conjugated
Application:	Western Blotting (WB)

Product Details

Sequence:	MAEESERRAK EADQLKQDLQ EAREAERRAK QKLEIATKP TYPPMNIPIA
Predicted Reactivity:	Cow: 100%, Dog: 100%, Guinea Pig: 100%, Horse: 100%, Human: 100%, Mouse: 100%, Rabbit: 100%, Rat: 100%, Zebrafish: 100%
Characteristics:	This is a rabbit polyclonal antibody against NF2. It was validated on Western Blot.
Purification:	Affinity Purified

Target Details

Target:	Merlin (NF2)
Alternative Name:	NF2 (NF2 Products)
Background:	This gene encodes a protein that is similar to some members of the ERM (ezrin, radixin,

Target Details

moesin) family of proteins that are thought to link cytoskeletal components with proteins in the cell membrane. This gene product has been shown to interact with cell-surface proteins, proteins involved in cytoskeletal dynamics and proteins involved in regulating ion transport. This gene is expressed at high levels during embryonic development, in adults, significant expression is found in Schwann cells, meningeal cells, lens and nerve. Mutations in this gene are associated with neurofibromatosis type II which is characterized by nervous system and skin tumors and ocular abnormalities. Two predominant isoforms and a number of minor isoforms are produced by alternatively spliced transcripts.

Alias Symbols: ACN, BANF, SCH

Protein Interaction Partner: VPRBP, CD44, UBC, KDM1A, AMOTL2, YAP1, PPP1R8, UBD, CCNB1IP1, HGS, CUL4A, DDB1, GPS1, WWC1, PYGO2, AMOT, SCHIP1, SGSM3, NF2, TSC1, TARBP2, SLC9A3R1, PAK1, XPO1, PXN, SDCBP, RALGDS, SPTBN1, ERBB2, ITGB1, EZR, CTNNB1, AGAP2, AKT1, RIT1, ARHGAP32, SOS1, MED2

Protein Size: 507

Molecular Weight: 56 kDa

Gene ID: 4771

NCBI Accession: [NM_181830](#), [NP_861968](#)

Pathways: [Cell-Cell Junction Organization](#)

Application Details

Application Notes: Optimal working dilutions should be determined experimentally by the investigator.

Comment: Antigen size: 507 AA

Restrictions: For Research Use only

Handling

Format: Liquid

Concentration: Lot specific

Buffer: Liquid. Purified antibody supplied in 1x PBS buffer with 0.09 % (w/v) sodium azide and 2 % sucrose.

Preservative: Sodium azide

Precaution of Use: This product contains Sodium azide: a POISONOUS AND HAZARDOUS SUBSTANCE which

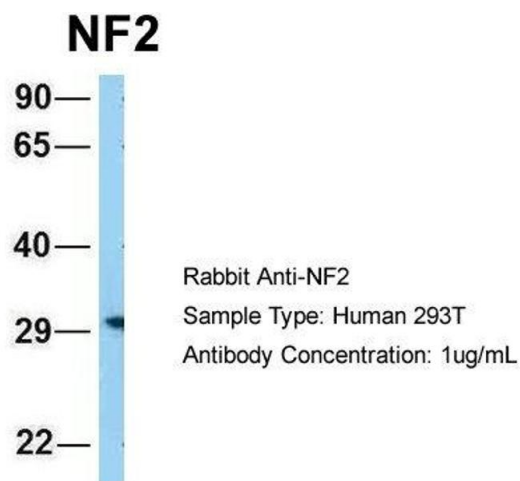
Handling

	should be handled by trained staff only.
Handling Advice:	Avoid repeated freeze-thaw cycles.
Storage:	-20 °C
Storage Comment:	For short term use, store at 2-8°C up to 1 week. For long term storage, store at -20°C in small aliquots to prevent freeze-thaw cycles.

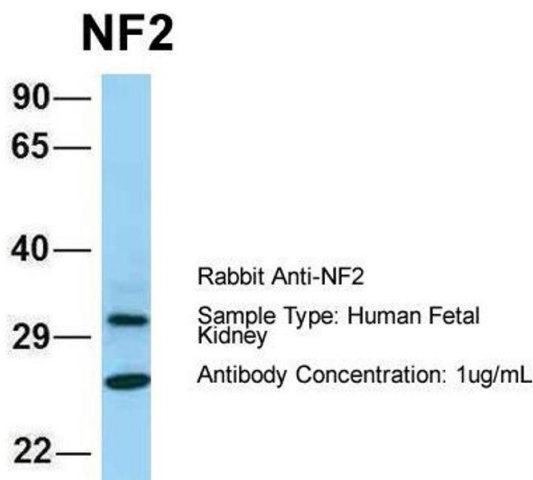
Publications

Product cited in:	loki, Wu, Takayama, Motohashi, Wakai, Funahashi: "A phosphodiesterase type-5 inhibitor, sildenafil, induces sperm capacitation and penetration into porcine oocytes in a chemically defined medium." in: Theriogenology , Vol. 85, Issue 3, pp. 428-33, (2016) (PubMed).
-------------------	---------------------------------------------------------------------------------------------------------------------------------------------------------------------------------------------------------------------------------------------------------------------------------------------------

Images



Western Blotting
Image 1. Host: Rabbit
Target Name: NF2
Sample Tissue: Human 293T
Antibody Dilution: 1.0 µg/mL



Western Blotting
Image 2. Host: Rabbit
Target Name: NF2
Sample Tissue: Human Fetal Kidney
Antibody Dilution: 1.0 µg/mL