

Datasheet for ABIN2789451
anti-GDF5 antibody (C-Term)[Go to Product page](#)

2 Images

Overview

Quantity:	100 µL
Target:	GDF5
Binding Specificity:	C-Term
Reactivity:	Human, Mouse, Rat, Horse, Cow, Dog, Guinea Pig, Rabbit
Host:	Rabbit
Clonality:	Polyclonal
Conjugate:	This GDF5 antibody is un-conjugated
Application:	Western Blotting (WB)

Product Details

Immunogen:	The immunogen is a synthetic peptide directed towards the C-terminal region of GDF5
Sequence:	YLFSQRRKRR APLATRQGKR PSKNLKARCS RKALHVNFKD MGWDDWIIAP
Predicted Reactivity:	Cow: 93%, Dog: 93%, Guinea Pig: 93%, Horse: 93%, Human: 100%, Mouse: 93%, Rabbit: 100%, Rat: 100%
Characteristics:	This is a rabbit polyclonal antibody against GDF5. It was validated on Western Blot.
Purification:	Affinity Purified

Target Details

Target:	GDF5
Alternative Name:	GDF5 (GDF5 Products)

Target Details

Background:	<p>The protein encoded by this gene is a member of the bone morphogenetic protein (BMP) family and the TGF-beta superfamily. This group of proteins is characterized by a polybasic proteolytic processing site which is cleaved to produce a mature protein containing seven conserved cysteine residues. The members of this family are regulators of cell growth and differentiation in both embryonic and adult tissues. Mutations in this gene are associated with acromesomelic dysplasia, Hunter-Thompson type, brachydactyly, type C, and chondrodysplasia, Grebe type. These associations confirm that the gene product plays a role in skeletal development.</p> <p>Alias Symbols: BMP14, CDMP1, LAP4, OS5, SYNS2</p> <p>Protein Interaction Partner: CHRDL2, BMPR1B, ACVR2B, HTRA1, BMPR1A, BMPR2, ACVR2A, ACVR1,</p> <p>Protein Size: 501</p>
Molecular Weight:	55 kDa
Gene ID:	8200
NCBI Accession:	NM_000557 , NP_000548
UniProt:	P43026

Application Details

Application Notes:	Optimal working dilutions should be determined experimentally by the investigator.
Comment:	Antigen size: 501 AA
Restrictions:	For Research Use only

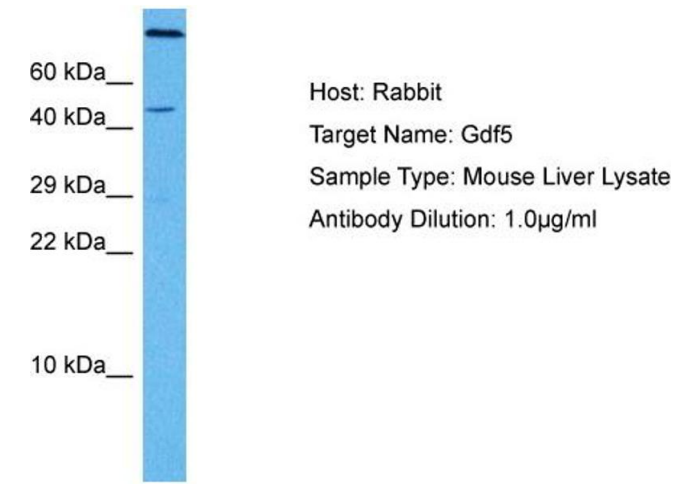
Handling

Format:	Liquid
Concentration:	Lot specific
Buffer:	Liquid. Purified antibody supplied in 1x PBS buffer with 0.09 % (w/v) sodium azide and 2 % sucrose.
Preservative:	Sodium azide
Precaution of Use:	This product contains Sodium azide: a POISONOUS AND HAZARDOUS SUBSTANCE which should be handled by trained staff only.
Handling Advice:	Avoid repeated freeze-thaw cycles.
Storage:	-20 °C

Handling

Storage Comment: For short term use, store at 2-8°C up to 1 week. For long term storage, store at -20°C in small aliquots to prevent freeze-thaw cycles.

Images



Host: Rabbit
Target Name: Gdf5
Sample Type: Mouse Liver Lysate
Antibody Dilution: 1.0µg/ml

Western Blotting

Image 1. Host: Mouse Target Name: GDF5 Sample Tissue: Mouse Liver Antibody Dilution: 1ug/ml



Western Blotting

Image 2. WB Suggested Anti-GDF5 Antibody Titration: 1.0 ug/ml Positive Control: Placenta