

Datasheet for ABIN2789453  
**anti-SHF antibody (C-Term)**



[Go to Product page](#)

1 Image

## Overview

|                      |  |
|----------------------|--|
| Quantity:            | 100 µL   |
| Target:              | SHF  |
| Binding Specificity: | C-Term   |
| Reactivity:          | Human, Mouse, Rat, Rabbit, Cow, Dog, Horse, Guinea Pig |
| Host:                | Rabbit   |
| Clonality:           | Polyclonal   |
| Conjugate:           | This SHF antibody is un-conjugated                     |
| Application:         | Western Blotting (WB)                                  |

## Product Details

|                       |   |
|-----------------------|---|
| Immunogen:            | The immunogen is a synthetic peptide directed towards the C-terminal region of human SHF        |
| Sequence:             | ADERISGPPA SSDRLAILED YADPFDVQET GEGSAGASGA PEKVPENDGY  |
| Predicted Reactivity: | Cow: 79%, Dog: 93%, Guinea Pig: 93%, Horse: 93%, Human: 100%, Mouse: 85%, Rabbit: 86%, Rat: 86% |
| Characteristics:      | This is a rabbit polyclonal antibody against SHF. It was validated on Western Blot.             |
| Purification:         | Affinity Purified   |

## Target Details

|                   |                                      |
|-------------------|--------------------------------------|
| Target:           | SHF                                  |
| Alternative Name: | SHF ( <a href="#">SHF Products</a> ) |

### Target Details

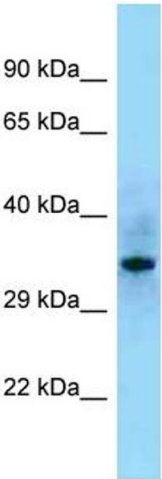
|                   |  |
|-------------------|--|
| Background:       | The function of this protein remains unknown.<br>Protein Size: 290 |
| Molecular Weight: | 31 kDa   |
| UniProt:          | <a href="#">Q7M4L6</a>   |

### Application Details

|                    |  |
|--------------------|--|
| Application Notes: | Optimal working dilution should be determined by the investigator. |
| Restrictions:      | For Research Use only  |

### Handling

|                    |   |
|--------------------|---|
| Format:            | Liquid  |
| Concentration:     | 1 mg/mL   |
| Buffer:            | Liquid. Purified antibody supplied in 1x PBS buffer with 0.09 % (w/v) sodium azide and 2 % sucrose.                                     |
| Preservative:      | Sodium azide  |
| Precaution of Use: | This product contains Sodium azide: a POISONOUS AND HAZARDOUS SUBSTANCE which should be handled by trained staff only.                  |
| Handling Advice:   | Avoid repeat freeze-thaw cycles.  |
| Storage:           | -20 °C  |
| Storage Comment:   | For short term use, store at 2-8°C up to 1 week. For long term storage, store at -20°C in small aliquots to prevent freeze-thaw cycles. |



**Western Blotting**

**Image 1.**