

Datasheet for ABIN2789454
anti-SHF antibody (Middle Region)



[Go to Product page](#)

1 Image

Overview

Quantity:	100 µL
Target:	SHF
Binding Specificity:	Middle Region
Reactivity:	Human, Mouse, Rabbit, Cow, Dog, Horse, Pig
Host:	Rabbit
Clonality:	Polyclonal
Conjugate:	This SHF antibody is un-conjugated
Application:	Western Blotting (WB)

Product Details

Immunogen:	The immunogen is a synthetic peptide directed towards the middle region of Human SHF
Sequence:	QPLPLYDTPY EPEEDGATPE GEGAPWPRES RLPEDDERPP EEYDQPWEWK
Predicted Reactivity:	Cow: 93%, Dog: 86%, Horse: 93%, Human: 100%, Mouse: 79%, Pig: 93%, Rabbit: 79%
Characteristics:	This is a rabbit polyclonal antibody against SHF. It was validated on Western Blot.
Purification:	Affinity Purified

Target Details

Target:	SHF
Alternative Name:	SHF (SHF Products)
Background:	The function of this protein remains unknown.

Target Details

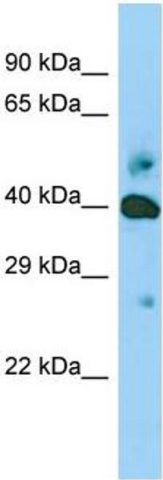
	Protein Interaction Partner: PDGFRA, Protein Size: 366
Molecular Weight:	42 kDa
Gene ID:	90525
UniProt:	E7EWB7

Application Details

Application Notes:	Optimal working dilutions should be determined experimentally by the investigator.
Comment:	Antigen size: 366 AA
Restrictions:	For Research Use only

Handling

Format:	Liquid
Concentration:	Lot specific
Buffer:	Liquid. Purified antibody supplied in 1x PBS buffer with 0.09 % (w/v) sodium azide and 2 % sucrose.
Preservative:	Sodium azide
Precaution of Use:	This product contains Sodium azide: a POISONOUS AND HAZARDOUS SUBSTANCE which should be handled by trained staff only.
Handling Advice:	Avoid repeated freeze-thaw cycles.
Storage:	-20 °C
Storage Comment:	For short term use, store at 2-8°C up to 1 week. For long term storage, store at -20°C in small aliquots to prevent freeze-thaw cycles.



Western Blotting

Image 1. Host: Rabbit Target Name: SHF Sample Type: Jurkat Whole Cell lysates Antibody Dilution: 1.0ug/ml