

Datasheet for ABIN2789461
anti-SLC2A3 antibody (Middle Region)[Go to Product page](#)

2 Images

Overview

Quantity:	100 µL
Target:	SLC2A3
Binding Specificity:	Middle Region
Reactivity:	Human, Rat, Cow, Goat, Rabbit, Dog, Guinea Pig, Horse, Pig, Sheep
Host:	Rabbit
Clonality:	Polyclonal
Conjugate:	This SLC2A3 antibody is un-conjugated
Application:	Western Blotting (WB)

Product Details

Sequence:	EELWPLLLGF TILPAIQSA ALPFCPESPR FLLINRKEEE NAKQILQRLW
Predicted Reactivity:	Cow: 86%, Dog: 93%, Goat: 86%, Guinea Pig: 79%, Horse: 79%, Human: 100%, Pig: 93%, Rabbit: 79%, Rat: 85%, Sheep: 86%
Characteristics:	This is a rabbit polyclonal antibody against SLC2A3. It was validated on Western Blot.
Purification:	Affinity Purified

Target Details

Target:	SLC2A3
Alternative Name:	SLC2A3 (SLC2A3 Products)
Background:	SLC2A3 is a facilitative glucose transporter. It is a probably a neuronal glucose transporter.

Target Details

	Alias Symbols: FLJ90380, GLUT3 Protein Interaction Partner: UBC, SNTA1, ELAVL1, GOLGB1, Protein Size: 496
Molecular Weight:	55 kDa
Gene ID:	6515
NCBI Accession:	NM_006931 , NP_008862
UniProt:	P11169
Pathways:	Warburg Effect

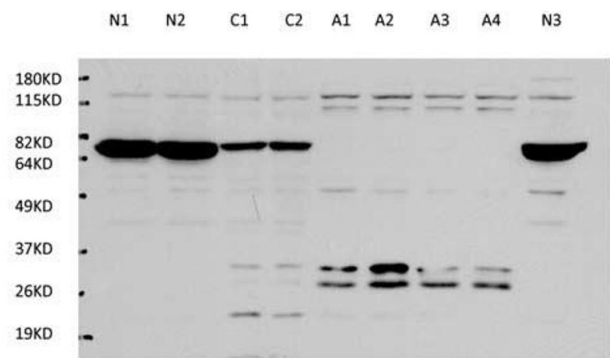
Application Details

Application Notes:	Optimal working dilutions should be determined experimentally by the investigator.
Comment:	Antigen size: 496 AA
Restrictions:	For Research Use only

Handling

Format:	Liquid
Concentration:	Lot specific
Buffer:	Liquid. Purified antibody supplied in 1x PBS buffer with 0.09 % (w/v) sodium azide and 2 % sucrose.
Preservative:	Sodium azide
Precaution of Use:	This product contains Sodium azide: a POISONOUS AND HAZARDOUS SUBSTANCE which should be handled by trained staff only.
Handling Advice:	Avoid repeated freeze-thaw cycles.
Storage:	-20 °C
Storage Comment:	For short term use, store at 2-8°C up to 1 week. For long term storage, store at -20°C in small aliquots to prevent freeze-thaw cycles.

SLC2A3



See Immunoblot 1 Data and Customer Feedback tab for more information.



Rabbit Anti-SLC2A3 Antibody
Catalog Number: ARP63350
Lot Number: QC34311
Lane: COLO205 Cell Lysate

Antibody Titration: 1.0µg/ml
Gel Concentration: 12%

Western Blotting

Image 1. WB Suggested Anti-SLC2A3 Antibody

Titration: 1 ug/ml

Positive Control: Cultured mouse primary cortex neuron, mouse cerebellum tissue sample, cultured mouse primary cortex astrocyte,

Western Blotting

Image 2.