

Datasheet for ABIN2789470

anti-Cathepsin H antibody (C-Term)[Go to Product page](#)**1** Image

Overview

Quantity:	100 µL
Target:	Cathepsin H (CTSH)
Binding Specificity:	C-Term
Reactivity:	Human, Mouse, Rat, Cow, Dog, Guinea Pig, Horse, Rabbit
Host:	Rabbit
Clonality:	Polyclonal
Conjugate:	This Cathepsin H antibody is un-conjugated
Application:	Western Blotting (WB)

Product Details

Sequence:	DFMMYRTGIY SSTSCHKTPD KVNHAVLAVG YGEKNGIPYW IVKNSWGPQW
Predicted Reactivity:	Cow: 100%, Dog: 100%, Guinea Pig: 100%, Horse: 100%, Human: 100%, Mouse: 93%, Rabbit: 100%, Rat: 100%
Characteristics:	This is a rabbit polyclonal antibody against CTSH. It was validated on Western Blot.
Purification:	Affinity Purified

Target Details

Target:	Cathepsin H (CTSH)
Alternative Name:	CTSH (CTSH Products)
Background:	The protein encoded by this gene is a lysosomal cysteine proteinase important in the overall

Target Details

degradation of lysosomal proteins. It is composed of a dimer of disulfide-linked heavy and light chains, both produced from a single protein precursor. The encoded protein, which belongs to the peptidase C1 protein family, can act both as an aminopeptidase and as an endopeptidase. Increased expression of this gene has been correlated with malignant progression of prostate tumors.

Alias Symbols: ACC-4, ACC-5, CPSB, DKFZp686B24257, MGC1519, minichain

Protein Interaction Partner: XRN1, UBC, CSTB, CSTA, SFTPB, BGLAP,

Protein Size: 335

Molecular Weight: 24 kDa

Gene ID: 1512

NCBI Accession: [NM_004390](#), [NP_004381](#)

UniProt: [P09668](#)

Pathways: [Positive Regulation of Endopeptidase Activity](#)

Application Details

Application Notes: Optimal working dilutions should be determined experimentally by the investigator.

Comment: Antigen size: 335 AA

Restrictions: For Research Use only

Handling

Format: Liquid

Concentration: Lot specific

Buffer: Liquid. Purified antibody supplied in 1x PBS buffer with 0.09 % (w/v) sodium azide and 2 % sucrose.

Preservative: Sodium azide

Precaution of Use: This product contains Sodium azide: a POISONOUS AND HAZARDOUS SUBSTANCE which should be handled by trained staff only.

Handling Advice: Avoid repeated freeze-thaw cycles.

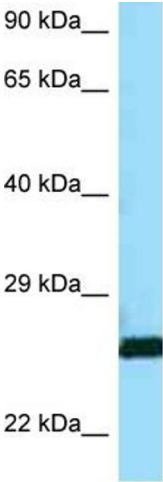
Storage: -20 °C

Storage Comment: For short term use, store at 2-8°C up to 1 week. For long term storage, store at -20°C in small

Handling

aliquots to prevent freeze-thaw cycles.

Images



Rabbit Anti-CTSH Antibody
Catalog Number: ARP63370
Lot Number: QC34378
Lane: A549 Cell Lysate

Antibody Titration: 1.0µg/ml
Gel Concentration: 12%

Western Blotting

Image 1.